



TEMPLE EMANU-EL Bulletin

Volume 77, Number 25

February 18, 2005

UPCOMING EVENTS

Friday, February 25 5:15 p.m.
Religious School: Sabbath Dinner

All students and their families are encouraged to join us for services in the Main Sanctuary, followed by a traditional Sabbath dinner. Students in kindergarten, first grade and second grade are invited to participate in the Sabbath dinner blessings. Extended family and friends also are invited to witness your child's participation.



Cost is \$25 per person.
RSVP by Monday, February 21 to
(212) 744-1400, ext. 226.

SABBATH SERVICES

Friday evening, February 25
Main Sanctuary

Organ Recital—5 p.m.
Sabbath Eve Service—5:15 p.m.
WQXR Radio (96.3 FM) and Internet
(www.wqxr.com) broadcasts—5:30 p.m.

Saturday morning, February 26
Women's Auxiliary Lounge

Torah Study—9:15 a.m.

Main Sanctuary

Service—10:30 a.m.
Torah Portion—Ki Sisa
Readings—Exodus 30:11-34:35
I Kings 18:1-39

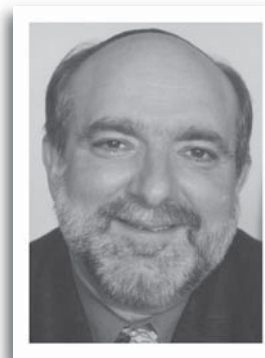
Rabbi David Ellenson preaching

GUEST
PREACHER

Saturday, February 26
10:30 a.m.

Rabbi Nathan A. Perilman
Memorial Sermon-Lecture

Temple Emanu-El is pleased to welcome Dr. David Ellenson, president of Hebrew Union College-Jewish Institute of Religion (HUC-JIR), who will be this year's guest preacher at the annual Rabbi Nathan A. Perilman Memorial Sermon-Lecture. Rabbi Ellenson



is a successor of Rabbi Isaac Mayer Wise, who founded HUC-JIR in 1875 in Cincinnati and for whom the Wise Hall of our synagogue is named.

A graduate of HUC-JIR's New York campus,

Dr. Ellenson holds a doctorate in philosophy from Columbia University. His passionate scholarly interest is the development of 19th century modern orthodox Judaism in Germany.

This event is named for Dr. Nathan Perilman, who served Temple Emanu-El from 1932 until his retirement in 1973. In 1982, the congregation established this lectureship in honor of the 50th anniversary of Dr. Perilman's ordination. The lecture is presented each year in the form of a Sabbath morning sermon. Dr. Perilman passed away in 1991.



 = Hearing enhancement system available

UPCOMING EVENTS

Sunday, February 27

11:30 a.m.

Emanu-El League: Afternoon at the Movies

Join us for an afternoon of classic silent comedy film shorts—Charlie Chaplin, Buster Keaton, Laurel and Hardy—accompanied by live music.

Our program also features brunch, a Q&A session after the screening and...a surprise!

The cost is \$7 for Emanu-El League members, \$12 for nonmembers.

Sign up for the event by Wednesday, February 23 to (212) 744-1400, ext. 241 or tsevents@aol.com and save \$2 on the cover. Enter through the Marvin and Elisabeth Cassell Community House, One East 65th Street. (*The Emanu-El League is for Jewish singles in their late 20s through early 40s.*)

Monday, March 7

6:30 p.m.

Wednesday, March 9

6:30 p.m.

Youth Group Leadership Academy

Don't forget about our next scheduled sessions: Monday for eighth graders, Wednesday for ninth graders. Dinner will be served.

Wednesday, March 9

10:30 a.m.

Coffee With Student Rabbi Howard Goldsmith

Women's Auxiliary members and their guests are invited to this special presentation by Student Rabbi Howard Goldsmith on Philip Roth's book *The Plot Against America*. RSVP to (212) 744-1400, ext. 235 by Friday, March 4. (*Please note, this program is in place of the program originally scheduled for March 8.*)

TO BE NOTED



Hearing Enhancement System

Both the Main Sanctuary and the Leon Lowenstein Sanctuary are equipped with an infrared sound system. Headsets or neck loops may be obtained from an usher or lobby attendant.

Special Prayer Books

Large-print volumes of the *Union Prayer Book* can be obtained from one of our ushers or lobby attendants for use during Sabbath services. Braille editions also are available.

PULPIT FLOWERS

**Pulpit flowers at
Sabbath worship services
this weekend are the generous
donation of our congregants:**

Rosalind Pretzfelder
in loving memory of
Tillie and George Pretzfelder

**For information about sponsoring
Pulpit Flowers or an Oneg Shabbat,
contact Sherry Nehmer at
(212) 744-1400, ext. 312 or
snehmer@emanuelnyc.org.**

Charles S. Salomon
The Universal Funeral Chapel
1076 Madison Avenue (212) 753-5300
Our service is available in the Temple, home, or our Chapel.

B'NEI MITZVAH

**The following Religious School students
will become B'nei Mitzvah this weekend:**

*Michael Harris Thaler, son of
Linda and Fred Thaler*

*Molly Cara Gendelman, daughter of
Nina Leighton and David Gendelman*

*Samuel Jacob Wetzler, son of
Rebecca and Mark Wetzler*

**We are grateful for their sponsorship of
Friday evening's Oneg Shabbat.**

The Cemeteries of Congregation Emanu-El
Salem Fields and Beth-El
A limited number of above-ground crypts are available in
our community mausoleum. For information, please call
Dr. Mark W. Weisstuch at the Temple Office, (212) 744-1400.

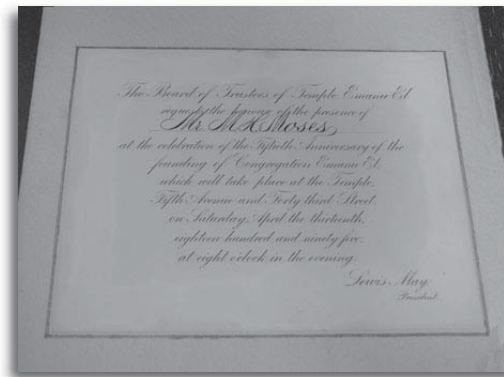
FROM THE ARCHIVES: EMANU-EL TURNS 50

For three days in April 1895, members of Congregation Emanu-El celebrated the 50th anniversary of the founding of their synagogue. Activities commenced with a Friday evening service on April 12, where introductory remarks were made by the Rev. Dr. Gustav Gottheil, Temple Emanu-El's third senior rabbi. Sabbath morning services were held on Saturday, April 13, and members were beckoned to return to the synagogue (located still on 43rd Street and Fifth Avenue at this time) through hand-scripted invitations, under the auspices of then president Lewis May, for evening festivities. Entrance cards also were required.

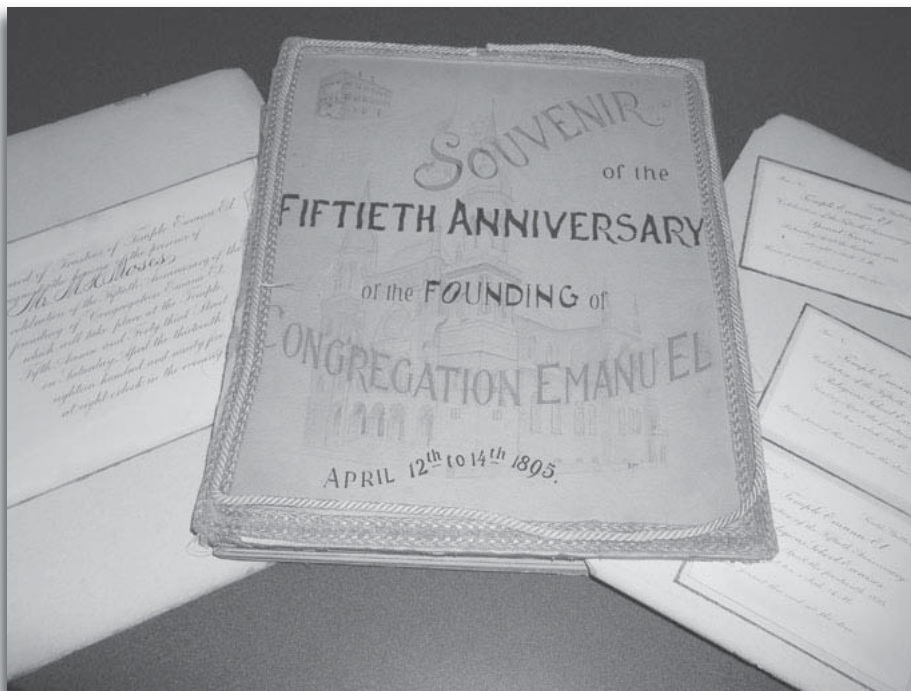
As part of the celebration, a fundraising proposal was announced to Temple members. Collected monies would be used to expand the 43rd Street site into the vacant adjoining lot by building the "Temple Emanu-El Chapel," which would be dedicated in remembrance of the 50th anniversary and would be used for marriages, funerals, meetings, lectures and philanthropic work.

Activities culminated Sunday morning, April 14, with a Children's Festival that in-

cluded flower offerings and prayers. Richard J.H. Gottheil, son of the Rev. Dr. Gottheil, delivered a history of the Temple Emanu-El Religious School. Also, the Rev. J. Silverman, D.D., delivered the "significance of Israel's history" as described through six periods: Mount Sinai, Solomon's Temple, the Maccabees, Jerusalem, Spain and America: Temple Emanu-El of New York City.



A beautifully printed invitation for the Saturday evening festivities, addressed to Mr. M. H. Moses



A hand-crafted scrapbook, commemorating Temple Emanu-El's 50th anniversary and celebration

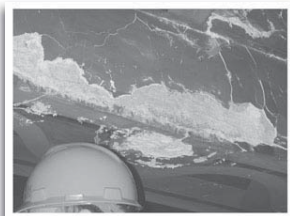
AROUND THE TEMPLE

Sanctuary Restoration: A Bird's Eye View

Members of the Women's Auxiliary and their guests gathered in the Leventritt Room on February 8 for a special presentation by Temple Administration Mark H. Heutlinger, who delivered a fascinating history of our Temple's architecture and the styles that influenced its design, as well as an update on the restoration of the Main Sanctuary and the Beth-El Chapel.



*Mark Heutlinger
discussing the influence
of Japanese art*

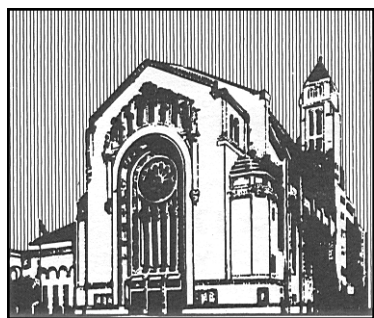


*Decay of plaster of Paris
on Main Sanctuary beams*



*Hand-painted designs on
the Main Sanctuary ceiling*

TEMPLE EMANU-EL BULLETIN



February 18, 2005
Volume 77, Number 25
Web site: www.emanuelnyc.org

Dr. David M. Posner

Senior Rabbi

Rabbi Amy B. Ehrlich

Associate Rabbi

Rabbi Nadia E. Gold

Assistant Rabbi

Lori Corrsin

Cantor

Dr. Ronald B. Sobel

Senior Rabbi Emeritus

Robert A. Bernhard

President

Rabbi Leon A. Morris

*Director of the Skirball Center
for Adult Jewish Learning*

Dr. Mark W. Weisstuch

Administrative Vice President

Mark H. Heutlinger

Administrator

Robyn W. Cimbol

Director of Development

Henry Fruhauf

Administrator Emeritus

Published weekly September 3 through
June 10 by Congregation Emanu-El of the
City of New York, formed by the
consolidation of Emanu-El Congregation
(founded 1845) and Temple Beth-El.

Postmaster, send address changes to:
Temple Emanu-El Bulletin, One East 65th Street
New York, NY 10021 (212) 744-1400
Periodicals Postage Paid at New York, NY
USPS 891-160.

PERIODICALS POSTAGE
PAID AT NEW YORK, NY