

# Temple Emanu-El Bulletin



## SHABBAT SHIRA: SERMON IN PSALMS

All are invited to join us on **Friday, February 3** at **6 PM** for Sabbath services followed by a sermon in song. The theme is Psalms. **(Learn more, page 2 »)**

## WORSHIP SERVICES

SUNDAY — THURSDAY

5:30 PM • Marvin & Elisabeth  
Cassell Community House  
(One East 65th Street)

## FRIDAY EVENING

Main Sanctuary  
(Fifth Avenue at 65th Street)

Organ Recital—5:45 PM  
Service Begins—6 PM

## SATURDAY MORNING

Sixth Floor Lounge  
(One East 65th Street)

Torah Study—9:15 AM

Main Sanctuary  
(Fifth Avenue at 65th Street)

Organ Recital—10:15 AM  
Service Begins—10:30 AM

**K. Scott Warren,**  
Organist/Choir Director

Services may be heard live or via podcast through the Temple website at [www.emanuelpc.org](http://www.emanuelpc.org). Follow the "Listen to the Broadcast of Services" link from the Home Page.

Hearing loop in Sanctuary and Beth-El Chapel; switch aid to T-coil. Headsets or neck loops also available.



## Psalms: Poems of the Heart

By Cantor Lori Corrsin

---

**"Out of the depths  
I call You, O Lord.  
O Lord, listen to my cry..."**

(from Psalm 130)

---



**N**ATAN (ANATOLY) SHARANSKY, former Soviet Refusenik, spent nearly nine terrible years in solitary confinement, imprisoned by

the Soviet authorities for wanting to emigrate from the Soviet Union to Israel.

During all the years of isolation, misery and anguish, it was his reading of the

Book of Psalms—his only reading material—that gave him strength and hope.

Writing about Sharansky's incarceration, his wife, Avital, said:

*Anatoly has been educated to his Jewishness in a lonely cell in Chistopol Prison, where locked alone with the Psalms of David, he found expression for his innermost feelings in the outpourings of the King of Israel thousands of years ago.*

When he finally was exchanged for a Soviet spy, Sharansky refused to relinquish his Book of Psalms, carrying it with him to freedom. He brought it to Jerusalem, holding it high as friends and admirers carried him to the Western Wall.

---

**"Though I walk  
through a valley of  
deepest darkness,  
I fear no harm,  
for you are with me."**

(from Psalm 23)

---

What is it about this biblical book that is so enthralling?

*continued on page 15*



## WEEKLY TORAH PORTION

### **B'shalach**

(Exodus 13:17-17:16)

Read Saturday, February 4

**Synopsis:** Israelites follow pillar of cloud and fire; Israelites cross Red Sea; Egyptians drown in Red Sea; Moses and Miriam lead victory celebration in song; Moses makes bitter water sweet; manna from Heaven; water from the rock; Amalek attacks and is defeated.

**Sermon: Rabbi Ehrlich**

### **Yitro** (Exodus 18:1-20:23)

Read Saturday, February 11

**Synopsis:** Jethro advises Moses to delegate; Israelites reach Mount Sinai; Israelites purify themselves in preparation for the Ten Commandments; God gives the Ten Commandments.

**Sermon: Rabbi Posner**

### **Mishpatim**

(Exodus 21:1-24:18)

Read Saturday, February 18

**Synopsis:** Laws concerning slaves, violence, property, restitution, society, religion, universal justice, sabbatical years, Sabbath and annual festivals; God promises military victory; Israelites promise to follow covenant; sealing of covenant with sacrifice; Moses ascends Mount Sinai to get tablets.

**Sermon: Rabbinic Intern Hannah Goldstein**

### **T'rumah** (Exodus 25:1-27:19)

Read Saturday, February 25

**Synopsis:** Israelites bring gifts to build the Tabernacle; God gives directions for building the Ark, table, lamp-stand, the Tabernacle itself, framework, curtain, altar for burnt offerings.

**Sermon: Rabbi Zeidman**

# Worship & Spirituality



## Shabbat Shira: Sermon in Song

Friday, February 3 • Immediately following the 6 PM service  
Main Sanctuary (Fifth Avenue at 65th Street)

**SHABBAT SHIRA** (the Sabbath of Song) is celebrated on the Sabbath of the Torah portion *B'shalach*. Temple Emanu-El celebrates this time of year with a special weekend of Jewish music. Included is the chanting of the "Song of the Sea" and a Sermon in Song that explores some of the varied repertoire of our heritage. This year's theme is Psalms.



The **Book of Psalms** is an outpouring of the heart, expressing the despair, hope, love, thanksgiving, praise and exultation of the human spirit. Composers through the ages have been inspired by these 150 beautiful prayers/poems. We will perform pieces by Salamone Rossi, Louis Lewandowski, Max Janowski and Lili Boulanger.

Join us as **Cantor Lori Corrsin** and our world-class **Temple Emanu-El Choir** sing these emotive texts from the *bimah*, conducted by **K. Scott Warren** and accompanied by **Dr. Andrew Henderson** on our magnificent organ.

**NOTE: THIS EVENT IS A SHABBAT @ EMANU-EL SERVICE.**

## Shabbat Kodesh Service

Friday, February 10 • 6:30 PM • 10 East 66th Street



**AT SHABBAT KODESH**, Hebrew prayers are sung with lively melodies, and the weekly Torah reading is made meaningful through creative storytelling. **All are welcome at this service**, which builds upon the curriculum and community of the Religious School. This month's service will feature the **Junior Choir**. Afterward, we will celebrate with a festive *Oneg Shabbat*.

Photo by Elizabeth Wright Kahane

---

---

## Young Families: Tot Shabbat

Saturday, February 11 • 10 AM • One East 65th Street

**F**OR OUR PRESCHOOL through kindergarten families we offer a creative and age-appropriate service that incorporates singing, movement and storytelling. Guests are welcome; reservations required.

**RSVP to Young Families by Friday, February 10; send an email to [youngfamilies@emanuelnyc.org](mailto:youngfamilies@emanuelnyc.org) or call (212) 744-1400, ext. 242.**



## Shabbat @ Emanu-El



**P**UT THE WORLD “on hold” for an hour a week and allow yourself to share an uplifting, spiritual experience that can transform the rest of the week. Shabbat is a mini-vacation you can enjoy 52 weeks a year. **Shabbat @ Emanu-El** is a way to focus on Shabbat and encourage your participation. Bring your family; meet your friends here; leave refreshed and continue the conversation over Shabbat dinner. There is a place in the sanctuary with your name on it...

As part of Shabbat @ Emanu-El, we have highlighted one Shabbat a month when we especially encourage you to bring your family and friends and join in worshipping in community. On **March 2** we invite you to continue the spirit of Shabbat after services with a meal—at home, at Temple (**see page 8**) or at a restaurant—in the company of your family and friends.



### TORAH COMMENTARY

Get more out of the Torah! Read our weekly Torah commentary, written by our clergy and Temple staff, on the Emanu-El website: [www.emanuelnyc.org](http://www.emanuelnyc.org).

**Follow the link from the Home Page.** Previous commentaries can be read through the archive.



### BROADCAST OF SERVICES

Sabbath and holiday worship services may be heard live through the Temple website, as well as downloaded and used with a personal audio player.

**Follow the “Listen to the Broadcast of Services” link from the Home Page.**



Launch the Live365 Radio audio player starting at 5:45 PM on Fridays, 10:15 AM on Saturdays and just prior to the start of holiday services. At any other time, launch the Emanu-El audio player, or download the MP3 files. (Right click the links and save the files.) MP3 files and podcasts are available shortly after the completion of the live service and for one week afterward.

### WEEKLY MUSIC

Music programs for Sabbath and holiday services are posted on the website.

**Click “Worship” → “Music at Emanu-El.”**

You also can have the program delivered to your inbox each week.

**Click “About Us” → “Publications” → “Electronic Mailing Lists.”**





**EMANU-EL  
READS**

**ABOUT THE BOOK:  
THE EICHMANN TRIAL**

The capture of **SS Lt. Colonel Adolf Eichmann** by Israeli agents in Argentina in May of 1960 and his subsequent trial in Jerusalem by an Israeli court electrified the world. The public debate it sparked on where, how and by whom Nazi war criminals should be brought to justice, and the international media coverage of the trial itself, was a watershed moment in how the civilized world in general and Holocaust survivors in particular found the means to deal with the legacy of genocide on a scale never seen before.

Award-winning historian **Deborah E. Lipstadt** gives an overview of the trial and analyzes the dramatic effect that the survivors' courtroom testimony—which was itself not without controversy—had on a world that regularly commemorated the Holocaust but never fully understood what the millions who died and the hundreds of thousands who managed to survive actually experienced.

As the world continues to confront the ongoing reality of genocide and ponder the fate of those who survive it, this trial of the century, offers a legal, moral and political framework for coming to terms with unfathomable evil. Lipstadt infuses a gripping narrative with historical perspective and contemporary urgency. *(Source: Publisher's website)*

**Lectures • Classes • Tours**



The following programs have been scheduled in conjunction with our Emanu-El Reads program. This year's book selection is *The Eichmann Trial* by Deborah E. Lipstadt, Dorot Professor of Modern Jewish History and Holocaust Studies, Tam Institute for Jewish Studies at Emory University. Professor Lipstadt's work describes the circumstances of Eichmann's life in Argentina, the details of the trial, and a particularly nuanced and sensitive analysis of Hannah Arendt's account of the trial.

**The Eichmann Trial in Context**

**Wednesday, February 1 • 6:30 PM • One East 65th Street**

**T**HE EICHMANN TRIAL is the most prominent of numerous prosecutions brought by Israel under its 1950 "Nazi and Nazi Collaborators (Punishment) Law." **Menachem Rosensaft** will discuss how Israel's prosecution of Adolf Eichmann fits into the overall framework of Nazi war-criminal trials since World War II.

**MENACHEM Z. ROSENSAFT** is general counsel of the World Jewish Congress, adjunct professor of Law at Cornell Law School, lecturer in law at Columbia Law School and distinguished visiting lecturer at Syracuse University College of Law. The son of two Nazi concentration camp survivors, Mr. Rosensaft was born in the Bergen-Belsen displaced persons camp in 1948.



**Argentina: A Nazi Paradise?  
The Case of Eichmann**

**Tuesday, February 21 • 6:30 PM • One East 65th Street**



**B**ORN AND RAISED in Buenos Aires, **Rabbi Alfredo Borodowski** will discuss the political and cultural environment in Argentina that made it possible for Eichmann to find refuge there. He also will share personal stories about being Jewish in Buenos Aires.

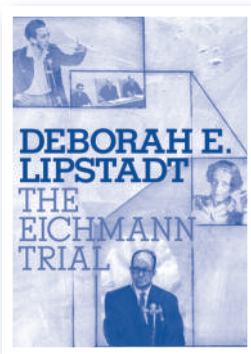
**RABBI ALFREDO BORODOWSKI** is executive director of the Skirball Center for Adult Jewish Learning. Prior to joining the Skirball staff, he served as executive director of the Shalom Hartman Institute for North America.

---

---

## EMANU-EL READS DISCUSSION GROUPS

- » **Men's Club Book Group:**  
Tuesday, February 7 • 8:30 AM – 9:30 AM
- » **Stettenheim Literary Circle:**  
Wednesday, February 15 • 6:30 PM – 8 PM
- » **Religious School Families:**  
Sunday, February 26 • 10 AM – 11:30 AM
- » **Women's Auxiliary Book Group:**  
Tuesday, February 28 • 12:30 PM – 2 PM



**O**PEN TO ALL members of the Temple, our discussions will be held in the Marvin and Elisabeth Cassell Community House (One East 65th Street). All sessions will be moderated by **Temple Librarian Elizabeth F. Stabler**. She will be joined at the Religious School session by **Mark Willner**, who specializes in Holocaust education and has served not only as an educator and consultant in the area for Temple Emanu-El's Religious School but also on a national level. Light refreshments will be served. Attendees to the Women's Auxiliary session are invited to bring their own brown-bag lunch.

## THE SKIRBALL CENTER'S ANNUAL CHARLES GROSSMAN LECTURE IN JEWISH INTELLECTUAL HISTORY

### *History Written, History Re-Written*

Tuesday, March 6 • 7 PM • One East 65th Street



**N**O TOPIC RELATED to the Holocaust excites more passion and debate than the part played by President Roosevelt's administration and the American Jewish community in responding to the persecution and murder of European Jewry. Did they sit idly by while European Jews were murdered, or did they do as much as they were able, given the political realities of the time?

**PROFESSOR DEBORAH LIPSTADT** will explore the possibility that this debate is being used, in great measure,

as a foil for contemporary issues facing the Jewish community. Is this historical argument as much about the present as it is about the past? Is history being used, or is it being abused to further contemporary goals?

Attendance is free and open to the public.

---

---

## SKIRBALL



*Skirball Sunday Seminars are open to the public. Enter at One E. 65th Street. Sessions are pay-as-you-go (\$60 each); register with the Skirball Center by calling (212) 507-9580.*

### **RABBI MARSHALL MEYER: LEADERSHIP, SPIRITUALITY AND RENEWAL**

**February 5 • 10 AM - 2 PM**

Learn about a leader who was a strong critic of the Argentinian military government of 1976–1982, working to save the lives of hundreds of persecuted individuals. Discover how, upon his return to the U.S., he transformed Congregation B'nai Jeshurun with his challenging theology and be inspired by this rabbi whose educational goal was to create a multidimensional human being, connected to God and his fellow human beings in integrity and dialogue. *(Led by Dr. Daniel Fainstein; held in partnership with B'nai Jeshurun)*

### **SCIENCE AND RELIGION: CONCORD OR DISCORD?**

**February 12 • 10 AM - 2 PM**

Discover an original and innovative interpretation of the creation narrative, discuss the significance of biblical miracles, and consider the implications of evolutionary theory for morality and human freedom—our goal being to establish that religion and science function best in partnership. *(Led by Rabbi Chaim Seidler-Feller)*



**RADICAL AMAZEMENT:  
MUSINGS ON MUSEUMS  
AND THE BELOVED  
COMMUNITY**

**Monday, March 5 • 6:30 PM**

The historical friendship between **Rabbi Abraham Joshua Heschel** and the **Reverend Dr. Martin Luther King Jr.** was a touchstone of the Freedom Movement in the United States. Forty years later, two museums—the **National Museum of African American History and Culture (NMAAHC)** and the **National Museum of American Jewish History**—embody the hopes and dreams of a people and resonate with the aspirations of these two spiritual leaders.



**Kinshasha Holman Conwill**, deputy director of the Smithsonian’s NMAAHC will discuss the challenges of museums that tell the very specific stories of people central to the American story.

*This event is organized by the Herbert & Eileen Bernard Museum of Judaica and the Women’s Auxiliary.*

## Faith & Form

**Thursday, February 16 • 6:30 PM • One East 65th Street**

**H**ILDRETH MEIÈRE (1892-1961) was a prominent American muralist and mosaicist whose style was synonymous with Art Deco. She found her muse in monumental buildings: Their domes, ceilings, walls, windows and floors were her canvas. Her commissions are very well recognized and include several New York City attractions, such as the Red Banking Room at One Wall Street, the lobby of the Walker Lispenard Building and the 50th Street façade of Radio City Music Hall, as well as Temple Emanu-El.



Hildreth Meière (Courtesy of Louis Meière Dunn)

**Temple Administrator Mark Heutlinger** and **Senior Curator Elka Deitsch**, of the **Herbert & Eileen Bernard Museum at Temple Emanu-El**, will lead a tour of the Main Sanctuary and the mosaics of Hildreth Meière. Organized by the Bernard Museum, this event is held in conjunction with the exhibition ***Walls Speak: The Narrative Art of Hildreth Meière*** at **MOBiA (Museum of Biblical Art)**.

## Guided Tour of “Walls Speak”

**Thursday, February 23 • 11 AM • Museum of Biblical Art, 1865 Broadway (at 61st Street)**

**T**HIS EXHIBITION PRESENTS the liturgical work of **Hildreth Meière**, who completed more than 100 commissions from 1922 to 1961. Working in various media, she created altarpieces and designed decoration for Temple Emanu-El and St. Bartholomew’s Church in New York City, the Cathedral Basilica of St. Louis and the National Cathedral in Washington, D.C.

*Walls Speak: The Narrative Art of Hildreth Meière* will show the evolution of these and other of Ms. Meière’s liturgical works, commission by commission, to elucidate the artist’s creative process.

**Advance registration is required. RSVP to the Herbert & Eileen Bernard Museum at (212) 744-1400, ext. 259 or [museum@emanuelnyc.org](mailto:museum@emanuelnyc.org).**

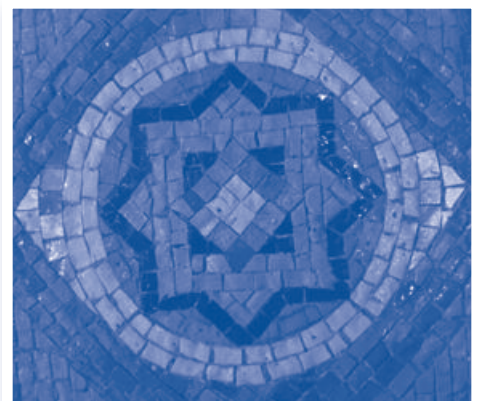


Photo by James Lorey/Evergreene Studios



## Eliot Spitzer at Emanu-El

Wednesday, February 8 • 6:30 PM • One East 65th Street

THE MEN'S CLUB cordially invites all Temple members and their guests to join us for our February event featuring:

### Eliot Spitzer

Mr. Spitzer was born and raised in New York. He graduated from the Horace Mann School, Princeton University and Harvard Law School, where he was an editor of the *Harvard Law Review*. After clerking for Federal District Court Judge Robert W. Sweet, Mr. Spitzer practiced at Paul, Weiss and then joined the Manhattan District Attorney's Office. While there he rose to serve as chief of the labor racketeering unit, successfully prosecuting senior members of the Gambino organized-crime family.

After several years in private practice, Mr. Spitzer was elected attorney general of New York in 1998 and re-elected in 2002.

His prosecutions in the areas of financial fraud, environmental protection and civil rights set a new standard for law enforcement.

In 2002 *Time Magazine* named him "Crusader of the Year"; *60 Minutes* dubbed him the "Sheriff of Wall Street"; and the *Financial Times* named him "Man of the Year."

Mr. Spitzer was elected governor of New York in 2006. Subsequent to his resignation in 2008, he has served as an anchor on CNN's prime-time show *In the Arena*, appeared with regularity on leading TV and radio shows focusing on politics and economics, served as a professor at CCNY, written for *Slate Magazine* and participated in running his family business. For more than 15 years, Mr. Spitzer and his family have been members of Temple Emanu-El.



**The charge for this event is \$20 for Men's Club members, \$25 for all other Temple members and their guests. Make checks payable to the Men's Club of Congregation Emanu-El. RSVP by Thursday, February 2 to (212) 744-1400, ext. 250 or mensclub@emanuclnyc.org.**



### CLUB 70: A GROUP FOR SENIORS

**Club 70** is an exciting and informative opportunity for all senior members of the Temple—men and women—to meet and discuss a wide range of issues important to senior citizens today. These meetings enable our senior congregants to socialize as well as participate in discussion groups.

**Our next meeting will be held on Wednesday, February 15 at 11 AM. Dr. Mark Weisstuch will discuss the Dead Sea Scrolls.**

Dr. Weisstuch, administrative vice president of the Temple, has an abiding passion for learning and teaching Jewish history. He has taught seminars on Second Temple era Judaism, general Jewish history, the history of the Jews in Poland and Eastern Europe, and various subjects related to the Holocaust. He believes that an understanding of ourselves as Jews today is predicated on a knowledge of how Judaism developed. He holds a doctorate in theater history from the City University of New York.

No fees are involved with this program. The only requirements are that participants be over 70 years of age and members of the congregation. Those interested in participating should contact the **Men's Club: (212) 744-1400, ext. 250 or mensclub@emanuclnyc.org.**

Attendees are invited to bring a brown-bag lunch.



**JEWISH EDUCATION:  
PREMISES  
AND CONCLUSIONS**



The third annual Sabbath dinner and discussion with **Rabbi David Posner** sponsored by the **Women's Auxiliary** will be held **Friday, March 2** at **7:15 PM**. The dinner follows the Friday evening service, which starts at 6 PM.

As this event coincides with **Shabbat @ Emanu-El (see page 3)**, all Temple members and their guests are invited to join us. The charge for dinner is \$35 for current Women's Auxiliary members, \$40 for all others.

**RSVP to the Women's Auxiliary by Monday, February 27: (212) 744-1400, ext. 235 or womaux@emanuelnyc.org. Make checks payable to the Women's Auxiliary.**

---

---

**FILM SCREENING**

## *Irena Sendler: In the Name of Their Mothers*

**Thursday, February 9 • 6 PM •  
Kosciuszko Foundation (13 East 65th Street)**

**D**URING WORLD WAR II a group of young Polish women, some barely out of their teens, outfoxed the Nazis to save the lives of several thousand Jewish children. For decades, **Irena Sendler** kept silent about her wartime work. Now, in interviews she gave before she died at the age of 98, Ms. Sendler reveals the truth in an award-winning documentary about a daring conspiracy of women in occupied Poland.

Ms. Sendler was a 29-year-old social worker when the Nazis invaded Poland. When Warsaw's Jews were imprisoned inside the ghetto without food and medicine, she and her friends smuggled in aid and began smuggling orphaned children out—hiding them in convents, orphanages and private homes. Soon they were appealing to Jewish mothers to part with their children in order to save them. And before the Nazis burned the entire ghetto to the ground, more than 2,500 children were smuggled out.



Over the next two years, they cared for the children, disguised their identities and moved them constantly, to keep them from being discovered and killed. They joined forces with the Polish Resistance to get money to fund and protect foster caretakers, and they preserved the true identities of the children.

In October 1943, Ms. Sendler was captured by the Gestapo, imprisoned and tortured. When she refused to divulge anything about her co-workers or her organization, she was sentenced to death. She escaped on the day she was to be executed, thanks to friends in the Resistance who were able to bribe a German guard. With a new false identity, she continued with her work until the end of the war. All of the children rescued by Ms. Sendler's network survived, and many were reunited with their families.

Producer/director **Mary Skinner** will be in attendance to discuss her award-winning documentary. A wine-and-cheese reception will follow.

**This event is sponsored by the WOMEN'S AUXILIARY and is open to all Temple members and their guests. The charge is \$30 for current Women's Auxiliary members, \$35 for all other Temple members and their guests. RSVP to (212) 744-1400, ext. 235 or womaux@emanuelnyc.org.**

---

---

---

---

# Intergenerational Study Session

Sunday, February 5 • 9:30 AM • One East 65th Street



FOR MORE THAN 25 years, volunteers from Emanu-El have been preparing 150 lunches for hungry New Yorkers every Sunday through the **Sunday Lunch Program**. In 2012, we will host an **Intergenerational Study Session** with **Rabbi Benjamin Zeidman** immediately preceding the Sunday Lunch Program on three dates. This is our second session; the final meeting will be **March 11 at 9:30 AM**.

Participants will enjoy a light breakfast, take a deeper look at our Jewish obligation to feed the hungry and discuss this topic with fellow volunteers.

All members of the Temple community, from teens to grandparents, are invited to join us. Contact Missy Bell, our coordinator of Youth Learning and Engagement, at (212) 744-1400, ext. 329 or [youthgroups@emanuelnyc.org](mailto:youthgroups@emanuelnyc.org).

## Family Trip to Israel

DATES FOR TEMPLE EMANU-EL'S next family trip to Israel have been set:

**December 23, 2012,  
through January 3, 2013**



To be led by **Rabbi Benjamin Zeidman** and **Lifelong Learning Director Saul Kaiserman**, our journey is designed to be equally appropriate for all members of the family—grandparents, parents and kids. We will explore Israel from the Negev Desert to the Golan Heights, from Jerusalem to Tel Aviv, and everywhere in between. This is a trip not to be missed! It is perfect for both first-time travelers and those well acquainted with the Jewish state.

For more information, call Rabbi Zeidman at (212) 744-1400, ext. 304, or send an email to [israeltrip@emanuelnyc.org](mailto:israeltrip@emanuelnyc.org).

## Let Us Know...

THROUGH GOOD TIMES AND BAD, the Temple Emanu-El clergy very much want to know about the important events happening in the lives of our community—the welcoming of a new child or grandchild, a graduation from school, the illness or death of a loved one.

Contact the Rabbinic Office at (212) 744-1400 or [rabbis@emanuelnyc.org](mailto:rabbis@emanuelnyc.org).

---

---



EMANU-EL  
EATS

As work continues on the **Emanu-El Eats** cookbook, we find that we would like to include more recipes in several categories. We'd like to acknowledge special dietary choices and needs with more recipes for vegetarian, vegan and gluten-free dishes.

We also would like to remind those who planned on sending in favorite family recipes but haven't done so as yet to do so now. Time is growing short, and we would like to publish our cookbook this year. Please help us meet this goal by sending in your recipes as soon as possible.

### Submission is easy:

Mail your favorite original recipes to *Emanu-El Eats*, c/o Temple Emanu-El, One East 65th St., NY, NY 10065 or email them to [emanueleats@emanuelnyc.org](mailto:emanueleats@emanuelnyc.org). Please include your contact information, and if you have a story to tell about the recipe, then we'd like to hear it.

We look forward to hearing from you soon!





### MIDNIGHT RUN

Emanu-El's Teen Community is getting ready for its third year of participation in **Midnight Run on Friday, February 10**. The evening will begin with Shabbat Kodesh, followed by a Shabbat dinner for the teens; then, teens will prepare meals, sort clothing and go out to designated spots in New York City to hand them out to NYC's homeless community.

All students from ninth through 12th grade are invited to participate. Students will earn six community-service hours. RSVP to **Missy Bell**, our **coordinator of Youth Learning and Engagement**: youthgroups@emanuelnyc.org.

**We also need help from the greater Emanu-El community!** We are collecting many items of **men's clothing** to hand out during the program, including winter coats, sweaters, sweatshirts, pants, hats, gloves and long underwear, as well as backpacks. **All of these items can be brought to the One East 65th Street lobby until February 10.** Please deliver items in a bag or box marked "Midnight Run." For more information, call Missy Bell at (212) 744-1400, ext. 329. Thank you for your support!

Learn more about Midnight Run at midnightrun.org.

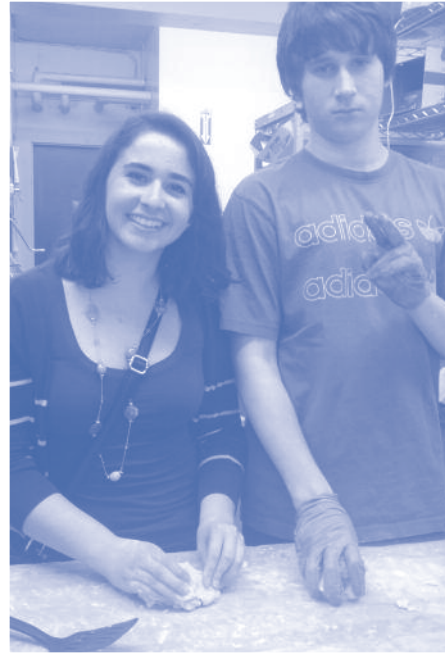


## Volunteering



### TEEN COMMUNITY OUTREACH

## Social Justice Day



ON SUNDAY, DECEMBER 11, Temple Emanu-El's **Senior Youth Group (SYG)** participated in NFTY-NAR's (North American Federation of Temple Youth — New York Area Region) Social Justice Day, along with approximately 100 other Reform Jewish teens from New York City, Long Island and Westchester.

The teens spent the day learning about economic and racial justice and discussing how they can combat these issues. They also participated in hands-on service projects, including baking cookies for local food pantries and making blankets for local homeless shelters. The day was a fun and meaningful experience!

Learn about other SYG activities on the Temple website.  Click "Learning" → "Youth & Young Adults" → "Senior Youth Group."

## Habitat for Humanity

**Sunday, March 18 • 9:15 AM - 4:30 PM • 849 Halsey St., Brooklyn**

THE TIKKUN OLAM COMMITTEE is seeking **Temple members** to assist **Habitat-NYC** at one of its rehab projects in the Bedford-Stuyvesant neighborhood of Brooklyn. We will be rehabbing an existing building to create six condominiums for families in a three-story, walk-up building. Each condo will have one bedroom, a den and one bathroom.

- Volunteers must be at least 16 years old.
- Volunteers must wear long pants, no shorts.
- Volunteers must wear closed-toe hiking or work boots, no sneakers.

No construction experience is necessary—just enthusiasm!

**Preregistration with the Tikkun Olam Committee is required. Call (212) 744-1400, ext. 452, or send an email to tikkunolam@emanuelnyc.org. Please use "Habitat for Humanity" as the subject of your email.**

---

---

## HOMEBOUND DELIVERY/SECOND SEDER

FOR MANY YEARS Congregation Emanu-El has provided what have become cherished community services: delivery of Passover meals to homebound seniors and our Second Seder for the Elderly. Many of you have given generously of your time and hard work, for which we are most grateful. We welcome new volunteers (Temple members only) and ask previous volunteers to offer their enthusiastic efforts once again.

### Important dates to note:

- Packing and delivery of meals for homebound seniors will be held on **Sunday, April 1** beginning at **9 AM**. (Enter at One East 65th Street; continental breakfast is served.)
- Second Seder will be served on **Saturday, April 7**. (Volunteers must arrive at 10 East 66th Street or at their assigned senior center at the appropriate time, based on their assigned duties.)

**Please complete and return the Volunteer Registration Form below no later than March 12. Fax to (212) 570-0826 or mail to Temple Emanu-El, One East 65th Street, New York, NY 10065, Attn: Second Seder. Direct your questions to (212) 744-1400, ext. 215.**

### VOLUNTEER REGISTRATION FORM

---

- Yes, I (we) will be available to **pack homebound bags** on Sunday, April 1, beginning at 9 AM.
- I (we) have a car and will be available for **homebound deliveries** on Sunday, April 1, beginning at 9:30 AM.
- Yes, I (we) will volunteer on Saturday, April 7 for **Second Seder**.
- Number of volunteers
- | <b>My Job Preference:</b>                                       | <b>Report Time to 10 East 66th Street:</b>        |
|---|---|
| <input type="checkbox"/> Setting Tables                         | 1 PM (All ages welcome)                           |
| <input type="checkbox"/> Kitchen Staff for Preparation of Meals | 1:30 PM (Adults only during cooking)              |
| <input type="checkbox"/> Bus Escort                             | 3:30 PM (Adults only)*                            |
|   | <b>*Report to assigned senior center location</b> |
| <input type="checkbox"/> Table Service                          | 4 PM (All ages welcome)                           |
| <input type="checkbox"/> Elevator Service                       | 4:30 PM (Ages 14 and older)                       |
| <input type="checkbox"/> Prep of Bus Bags                       | 6 PM (All ages welcome)                           |
- I am enclosing a contribution to help defray program costs.

---

Name (Please Print)

Evening Telephone

---

Mailing Address

Email Address

---

---



### VOLUNTEER PROGRAMS

#### HELP FEED THE HUNGRY ON SUNDAYS

Congregants with cars are needed to deliver meals prepared through Emanu-El's **Sunday Lunch Program to Yorkville Common Pantry** on East 109th Street. **Meals need to be picked up at the Temple between 4 PM and 5:30 PM on Sundays.** Please help us alleviate hunger with this "30-minute mitzvah." Contact the **Tikkun Olam Committee** for details or to volunteer: (212) 744-1400, ext. 452 or [tikkunolam@emanuelnyc.org](mailto:tikkunolam@emanuelnyc.org).

#### STITCH'N TIME

**Sunday, February 12**  
**11 AM - 2 PM**

All Temple members are invited to knit or crochet items for various groups in need. Yarn and patterns are provided, but you must bring your own needles (#8). Enter at One East 65th Street. Refreshments are served.

#### RONALD MCDONALD HOUSE DINNER

Once a month, Emanu-El congregants serve dinner and organize art projects and entertainment for families residing at NYC's **Ronald McDonald House**. All potential volunteers (Temple members only) must preregister with the **Women's Auxiliary**; call (212) 744-1400, ext. 235. Must be at least 18 years old and in good health. Our next dinner is **Thursday, February 16**.



**YOUNG FAMILIES:  
MOVIE MORNING**  
Sunday, February 5  
10 AM • One East 65th

Calling all Young Families fathers... Reserve Superbowl Sunday morning to be a Super Doting Dad. Let mom sleep late while you bring your child/children to a PJs-and-movie morning. Breakfast served!

Young Families events are for families with children of preschool age through kindergarten.

**RSVP by February 4:  
(212) 744-1400, ext.  
242 or youngfamilies@  
emanuelnyc.org.**



**CALLING DOTING DADS!**

Do you have a talent that you can share? **Young Families** would love to use your special gifts throughout the year, during our **Tot Shabbat onegs** or parties. Help us turn restless energy into something more creative through your talents!

**If interested, contact our Planning Committee:  
(212) 744-1400, ext. 242.**

## Early Childhood



### A New Program for the Nursery School

**T**HE JUILLIARD SCHOOL OF MUSIC will be visiting Temple Emanu-El's Nursery School four times this school year. "Musical Opposites" is the recurring theme.

On October 25, 2011, the children were introduced to the first set of musical opposites: *piano* and *forte* (soft and loud). Various percussion instruments from countries around the world were played to demonstrate this concept. A *cajon* from Peru (an instrument shaped like a box) demonstrated how size affects the dynamic of loud and soft. The length of the mallet or strike tapping an instrument also affected whether the sound was *forte* or *piano*. A *bendir* from Morocco, played first with a finger then a whole hand increased the sound until the music was *forte*.

On December 7, 2011, a string trio of violin, cello and viola played at the Nursery School. The musical opposite introduced at this performance was *adagio* and *allegro* (slow and fast). The musicians played several familiar songs, including lullabies and "Hava Nagila," and then asked the children to guess if the music was *adagio* or *allegro*. Clapping and marching was encouraged! The musicians explained that the instruments were made of wood and the bows made of horsehair. When one of the children asked how long it takes to learn to play an instrument, the musicians recommended that they "start young!"

We thank Beth and Chris Kojima, Nursery School parents, for bringing this wonderful program to our children. There will be two more performances during the second half of the year.



---

---

## Parenting at Emanu-El

**N**EW SESSIONS OF Temple Emanu-El's parenting programs led by child psychologist **Dr. Juliet Cooper** and **Rabbi Amy Ehrlich** will begin in February.

**"New Mothers"** is geared toward mothers with babies up to 12 months old. A new group, **"The Ones,"** is in formation for children ages 12 months to 24 months.

The **"Parent-Child Group"** is for parents with children ages 24 months to 33 months.



**Visit the Temple website for program details, including topics of discussion, and to download our registration form. Click "Community" → "Parenting @ Emanu-El."**

**New Mothers will meet on Mondays from 9:15 AM to 10:30 AM, February 6 through April 23 (except February 20, March 19 and 26); the charge is \$495 for Temple members, \$550 for nonmembers. The Ones will meet on the same dates from 11 AM to 12:30 PM; the charge is \$625 for Temple members, \$695 for nonmembers. The Parent-Child Group will meet Wednesdays from 9:15 AM to 10:30 AM, February 1 through April 11 (except March 21 and 28); the charge is \$625 for Temple members, \$695 for nonmembers. Preregistration is required for all groups. Contact us through [parenting@emanuelnyc.org](mailto:parenting@emanuelnyc.org) or by calling (212) 744-1400, ext. 206 to discuss your participation in the program.**

## Religious School



### PARENT EDUCATION

## Talking to Your Child About God

**Sunday, February 12 • 11 AM • 10 East 66th Street**  
**Monday, February 13 • 5:15 PM • 10 East 66th Street**

**"G**OD TALK" IS an essential component of Jewish life, but when it comes to kids, sometimes it brings up questions that we're not always prepared to answer. Religious School parents are invited to join us for a special class during which we will reflect on some of our kids' big questions and some of our own, and think about the best ways to respond when a child wants to know more about God.

**RSVP to Leah Kadosh, our coordinator of School and Family Learning, at (212) 744-1400, ext. 334 or [family@emanuelnyc.org](mailto:family@emanuelnyc.org).**



### RELIGIOUS SCHOOL

#### PRAYERS & BLESSINGS

**Shabbat Kodesh** services are similar to the worship conducted in our Religious School and enable our students to build a prayer community with their families and other Emanu-El members. Prayers and blessings have been posted to the Temple website as a resource for the service.

**(Click "Learning" → "Religious School" → "Shabbat Kodesh" → "Prayers & Blessings.")**

Audio recordings are MP3 files; PDFs feature Hebrew text, transliteration and English translation.

**Our next Shabbat Kodesh service will be held Friday, February 10 at 6:30 PM. (← See page 2)**

#### SCHOOL CLOSINGS

The Religious School will be closed from **Sunday, February 19 through Wednesday, February 22** in celebration of Presidents Day.

#### MITZVAH CORPS

This service-learning program for seventh graders empowers students to respond to important societal issues, such as education, senior-citizen care, diversity, hunger, homelessness and climate change.

Read about student activities, view photos and watch student videos on the **Mitzvah Corps Blog** on the Temple website.

**Click "Learning" → "Youth & Young Adults" → "Mitzvah Corps."**



### BAR/BAT MITZVAH PREPARATION

Children must be enrolled in Religious School in order to celebrate bar or bat mitzvah at Emanu-El.

A date can be scheduled when a child is in fourth grade or is 10 years old.

**To register your child for Religious School, call (212) 744-1400, ext. 226.**

**To schedule a date, call Sherry Nehmer at (212) 744-1400, ext. 312.**

Families are encouraged to make use of bar/bat mitzvah resources available on the Temple website.

Click "Learning" → "Religious School" → "Bar & Bat Mitzvah Program."



### A REMINDER ABOUT SPONSORSHIPS

Because the Emanu-El *Bulletin* is a monthly publication, please be advised that we need one month's notice for Pulpit Flower dedications and *Oneg Shabbat* sponsorships. **Call Sherry Nehmer at (212) 744-1400, ext. 312.**

### WOMEN'S AUXILIARY TRIBUTE FUND

Commemorate significant life-cycle events in a meaningful way **and** support the activities of the Women's Auxiliary. All contributions are listed in *Window on Emanu-El*.

**Contact the Women's Auxiliary at womaux@emanuelnyc.org or (212) 744-1400, ext. 235.**

## Life-Cycle Events



**The following students of our Religious School will become *B'NEI MITZVAH* in February:**

### Saturday, February 4

*Julia Claire Barasch*, daughter of Candy and Michael Barasch

### Saturday, February 11

*Max Howard Watson*, son of Margaret and Robert Watson

*Sabrina Rose Scollar*, daughter of Laurie and Marc Scollar

**We are grateful for their sponsorship of each Friday evening's Oneg Shabbat.**

**PULPIT FLOWERS at worship services have been donated by the following congregants:**

### For the Sabbath of February 3 and 4

Barry, Patricia and Elizabeth Berkule in loving memory of *Lloyd I. Berkule*

Mrs. B. E. Brandes in loving memory of *Bernard E. Brandes*

Mr. Sanford P. Brass in loving memory of his mother, *Rose D. Brass*

Mr. and Mrs. Elliot Brownstein in loving memory of *Sol Brownstein* and *Benjamin Silverman*

Elisabeth Cassell in loving memory of her cherished husband, *Marvin Cassell*

Edward Fleur in loving memory of his sister, *Joette Stephanie Fleur*

Mrs. A. Coleman Poll in loving memory of her brother, *Jacques G. Coleman Jr.*

**(continued)**

Charles S. Salomon  
The Universal  
Funeral Chapel  
1076 Madison Avenue  
(212) 753-5300  
Our service is available in the  
Temple, home or our Chapel.

The Cemeteries of Congregation Emanu-El  
Salem Fields and Beth-El  
A limited number of above-ground crypts are  
available in our community mausoleum.  
For information, please call Dr. Mark W. Weisstuch  
at the Temple Office, (212) 744-1400.

---

---

## PULPIT FLOWERS (continued)

### For the Sabbath of February 10 and 11

Mary K. and Rabbi Howard I. Bogot  
in loving memory of *Maxine Livingston Elbaum*

### For the Sabbath of February 17 and 18

Bettijane and Steven Eisenpreis in loving memory of  
*Alfred Eisenpreis*, and *Carol Hess Long* and *Clinton Mayer Long*

### For the Sabbath of February 24 and 25

Rosalind Pretzfelder in loving memory of *George Pretzfelder*

---

---

## Poems of the Heart (continued)

Psalms are quintessentially human. They are eloquent, powerful poems/prayers of the heart that express every human emotion. Knowing we are not alone, knowing that in our darkest moments of despair there is still light, can give us solace and inspire our being. As they did for Sharransky, the psalms can help to enrich the spiritual power of our lives.

---

**"May the words of  
my mouth and the  
meditation of my  
heart be acceptable  
to You, O Lord,  
my rock and my  
redeemer."**

(Psalm 19:15)

In the Five Books of Moses (Torah) and the Prophets (*N'vi-im*), God reaches out to us. In the Psalms, people are reaching out to God.

Professor Nahum M. Sarna writes:

*Psalms start with the recognition of just how tenuous life is: We suffer, we experience fear and exaltation; we meet with success and failure; we know contentment and anxiety; we experience betrayal, have enemies, even know rage and the desire for revenge; and we find vindication, comfort, new confidence...the psalms hold out hope for us, even in our darkest hours.*

(from *Songs of the Heart*)

The Book of Psalms, *T'hillim* (Praises) in Hebrew, is made up of 150 religious poems of differing subjects, lengths and moods. Our English title, Psalms, comes from *Liber Psalmorum*, the Latin name derived

*continued on page 16*

---

---



### OF BLESSED MEMORY

At the time of death, as well as during a period of illness, family members need the comfort, support and caring of a community. Temple Emanu-El's clergy and staff always are available to help soothe these difficult hours. Because there are many ways to honor a loved one, the rabbis and cantor can provide guidance that is suited to your family's personal philosophy.

**Call (212) 744-1400.**

### REMEMBERING LOVED ONES

Now that Temple Emanu-El broadcasts its own services over the Internet, we are able to accommodate all congregants who wish to share Sabbath services and have the name of a loved one read during *Kaddish*. If you wish to have a name read, then please call one of the rabbis during the week of *yahrzeit* observance.

### WEDDING MUSIC

Planning a wedding at Emanu-El? Well, don't forget about the music! Music can set a memorable tone at your wedding. Listen to potential musical selections performed by Temple organist K. Scott Warren. All links are MP3 files that may be downloaded to a personal listening device.

**Click "Worship" →  
"Ceremonies & Practices"  
→ "Life-Cycle Events"  
→ "Weddings"  
→ "Wedding Music."**





#### CLERGY

Dr. David M. Posner, *Senior Rabbi*  
Amy B. Ehrlich, *Associate Rabbi*  
Benjamin J. Zeidman,  
*Assistant Rabbi*  
Lori A. Corrsin, *Cantor*  
Dr. Ronald B. Sobel,  
*Senior Rabbi Emeritus*  
Hannah Goldstein, *Rabbinic Intern*  
David Mintz, *Cantorial Intern*

#### OFFICERS

Marcia Waxman, *President*  
Joan H. Bright, *Vice President*  
Neil B. Cooper, *Vice President*  
Karel L. Greenberg, *Vice President*  
John H. Streicker, *Vice President*  
Robert A. Calinoff, *Secretary*  
Stephen T. Shapiro, *Treasurer*

#### STAFF

Mark W. Weisstuch,  
*Administrative Vice President*  
Mark H. Heutlinger, *Administrator*  
Robyn W. Cimbol, *Senior Director,*  
*Development and Philanthropy*  
Sherry Nehmer, *Asst. Administrator*  
Christine Manomat, *Membership*  
Saul Kaiserman, *Director,*  
*Lifelong Learning*  
Rachel Brumberg, *Asst. Director,*  
*Lifelong Learning*  
Rabbi Alfredo Borodowski,  
*Executive Director, Skirball Center*  
*for Adult Jewish Learning*  
*at Temple Emanu-El*  
Ellen Davis, *Director,*  
*Nursery School*  
Elizabeth F. Stabler,  
*Temple Librarian, Ivan M.*  
*Stettenheim Library*  
Elka Deitsch, *Senior Curator,*  
*Herbert & Eileen Bernard*  
*Museum of Judaica*  
Charles S. Salomon,  
*Funeral Director*



Kathryn M. Roberts,  
*Bulletin Editor/Webmaster*

---

---

## Poems of the Heart (continued)

from the Greek word for “a song sung to a stringed instrument.” So, we know that the psalms are meant to be sung, not recited.

Many of the psalms are songs of thanksgiving or praise; the word *Halleluyah* (Praise God!) only occurs in the book of psalms.

Some are songs of supplication. All are meaningful expressions of the human soul.

---

### “Let all that breathes praise the Lord! *Halleluyah!*”

(from Psalm 150)

---

There are some who believe that King David may have written a portion of the psalms, which also are called the Psalms of David, in 1000 B.C.E. But scholars think they are actually a collection of poems by many different authors, probably beginning as early as the 10th century B.C.E. and continuing over a period of more than 600 years.

There is a wonderful Rabbinic story about King David’s composing of the psalms. It is said that when David went to sleep at night, he hung his harp over his bed. As he slept, the four winds came and plucked the strings of his harp. David would awake and sing along. According to the midrash, these songs became the psalms.

---

### “Sing to the Lord a new song! Sing to the Lord, all the earth!”

(Psalm 96:1)

---

Composers through the ages have been inspired by these exalting, sometimes passionate, sometimes reflective texts.

Please join us in the Main Sanctuary on *Shabbat Shira*, the Sabbath of Song, on Friday, February 3, 2012, at 6 PM for services and *Sermon in Psalms, Part I*. Come experience the glorious sound of our world-class organ and our amazing choir, singing these very beautiful songs/prayers of supplication and praise from the *bimah*.

And, save the date (May 18, 2012) for *Sermon in Psalms, Part II*, our performance of Leonard Bernstein’s exciting *Chichester Psalms* with choir, harp, percussion and organ.

---

### “All peoples, clap hands, shout out to God with a sound of glad song.”

(Psalm 47:2)

---

**WHAT DO YOU THINK? Join the conversation and post your thoughts.**  
Click “About Us” → “Publications” → “Bulletin Blog.”



# At a Glance: February 2012



**February 1**  
**Wednesday, 6:30 PM**  
*The Eichmann Trial*  
*in Context*  
 One East 65th Street



**February 3**  
**Friday, 6 PM**  
*Shabbat Shira:*  
*Sermon in Psalms, Part I*  
 Main Sanctuary



**February 5**  
**Sunday, 9:30 AM**  
*Intergenerational*  
*Study Session*  
 One East 65th Street



**February 5**  
**Sunday, 10 AM**  
*Young Families:*  
*Movie Morning*  
 One East 65th Street



**February 5**  
**Sunday, 10 AM - 2 PM**  
*Rabbi Marshall Meyer:*  
*Leadership, Spirituality*  
*and Renewal*  
 One East 65th Street



**February 7**  
**Tuesday, 8:30 AM**  
*Men's Club Book Group*  
 One East 65th Street



**February 8**  
**Wednesday, 6:30 PM**  
*Eliot Spitzer*  
*at Emanu-El*  
 One East 65th Street



**February 9**  
**Thursday, 6 PM**  
*Irena Sendler: In the*  
*Name of Their Mothers*  
 Kosciuszko Foundation  
 (13 East 65th Street)



**February 10**  
**Friday, 6:30 PM**  
*Shabbat Kodesh Service*  
 10 East 66th Street



**February 10**  
**Friday, 6:30 PM**  
*Senior Youth Group:*  
*Midnight Run*  
 10 East 66th Street



**February 11**  
**Saturday, 10 AM**  
*Young Families:*  
*Tot Shabbat*  
 One East 65th Street



**February 12**  
**Sunday, 10 AM - 2 PM**  
*Science and Religion:*  
*Concord or Discord*  
 One East 65th Street



**February 12**  
**Sunday, 11 AM**  
*Talking to Your*  
*Child About God*  
 10 East 66th Street



**February 12**  
**Sunday, 11 AM**  
*Stitch'n Time*  
 One East 65th Street



**February 13**  
**Monday, 5:15 PM**  
*Talking to Your*  
*Child About God*  
 10 East 66th Street



**February 15**  
**Wednesday, 11 AM**  
*Club 70*  
 One East 65th Street



**February 15**  
**Wednesday, 6:30 PM**  
*Stettenheim Literary Circle*  
 One East 65th Street



**February 16**  
**Thursday, 5 PM**  
*Ronald McDonald House*  
 405 East 73rd Street



**February 16**  
**Thursday, 6:30 PM**  
*Faith & Form*  
 One East 65th Street



**February 21**  
**Tuesday, 6:30 PM**  
*Argentina:*  
*A Nazi Paradise?*  
*The Case of Eichmann*  
 One East 65th Street



**February 23**  
**Thursday, 11 AM**  
*Guided Tour*  
*of "Walls Speak"*  
 Museum of Biblical Art  
 (1865 Broadway, at 61st St.)



**February 26**  
**Sunday, 10 AM**  
*Religious School:*  
*Book Discussion*  
 One East 65th Street



**February 28**  
**Tuesday, 12:30 PM**  
*Women's Auxiliary*  
*Book Discussion*  
 One East 65th Street



**Book Discussion**



**Community**



**Lecture • Class • Tour**



**Museum**



**Musical Program**



**Religious School Event**



**Volunteering**



**Worship & Spirituality**



**Young People's Program**



**TEMPLE EMANU-EL  
BULLETIN**

Vol. 84, No. 6  
February 2012

CONGREGATION EMANU-EL  
of the City of New York  
One East 65th Street, New York, NY 10065  
(212) 744-1400 • [www.emanuelnyc.org](http://www.emanuelnyc.org)

INSERT  
INDICIA  
HERE

# BEZALEL



**ART, CRAFT & JEWISH  
NATIONAL IDENTITY**

**EXHIBITION  
OPENING  
SAVE THE DATE**

**MARCH 22, 2012**

**HERBERT & EILEEN  
BERNARD MUSEUM  
OF JUDAICA**