

Temple Emanu-El Bulletin



IMPORTANT REMINDER: RELATIONSHIPS...

WHAT TO DO WHEN...?

December 7 • 7:30 PM

Temple Emanu-El and *The Jewish Week* once again sponsor a thought-provoking evening. Details on page 3.

WORSHIP SERVICES

SUNDAY — THURSDAY

5:30 PM • Marvin & Elisabeth
Cassell Community House
(One East 65th Street)

FRIDAY EVENING

Temple Sanctuary
(Fifth Avenue at 65th Street)

Organ Recital—5 PM
Service Begins—5:15 PM

SATURDAY MORNING

Sixth Floor Lounge
(One East 65th Street)

Torah Study—9:15 AM
Temple Sanctuary
(Fifth Avenue at 65th Street)

Organ Recital—10:15 AM
Service Begins—10:30 AM

K. Scott Warren,

Organist/Choir Director

Services may be heard
through the Temple website
at www.emanuelnyc.org.

Follow the "Listen to the
Broadcast of Services" link
from the Home Page.

Hearing loop in Sanctuary
and Beth-El Chapel; switch
aid to T-coil. Headsets or
neck loops also available.



The Bridge From Heritage to Legacy

By Robyn Weinstein Cimbol,
Senior Director of Development
and Philanthropy

NOWHERE IS THE confluence of
American and Jewish values more
evident than in philanthropy.

Tzedakah and the IRS treatment of charitable
contributions are subjects I often address, and
perhaps that is what you are expecting now,

especially as your e-mail and snail-mail boxes surely are overflowing with
year-end appeals for funds. And while the results of the recent mid-term
elections will influence decisions regarding taxes, the principal of *tzedakah*
has remained unchanging for thousands of years.

In early February of 2011, I will begin my 18th year of service to Congregation Emanu-El. I only am reminded of the passage of time when I consider that my daughters, now college students, were then both preschoolers. It remains a pleasure and privilege to collaborate with talented professionals and lay leaders, whose devotion to Temple Emanu-El is inspiring.

These years have witnessed an important transformation of Emanu-El, thanks to the generosity of the congregation. Beginning with the sesquicentennial celebrated in 1995 and its accompanying 150th Anniversary Campaign, a full-scale physical-plant

renewal has been accomplished. The more than \$25 million dollars raised has enabled all of the interior spaces of the Marvin and Elisabeth Cassell Community House to be refurbished and beautified, resulting in the increased comfort and functionality of Greenwald Hall, Isaac Mayer Wise Hall, the Leventritt Room and the Lowenstein Auditorium.

Your contributions furnished the capital to expand and modernize the Ivan M. Stettenheim Library, incorporating new technologies in a welcoming space. A home worthy of the magnificent Judaica collections



continued on page 8

WEEKLY TORAH PORTION

Parashat Mikeitz

(Genesis 41:1-44:17)

Read Saturday, December 4

Synopsis: Joseph interprets Pharaoh's dream; Joseph appointed prime minister of Egypt; Joseph's brothers go to Egypt to seek food; brothers return to Canaan to fetch Benjamin; Joseph frames Benjamin.

Sermon: Rabbi Ehrlich

Parashat Vayigash

(Genesis 44:18-47:27)

Read Saturday, December 11

Synopsis: Judah pleads for Benjamin's freedom; Joseph reveals himself to his brothers; Jacob brings family to Egypt, settles in Goshen; Joseph governs during famine in Egypt.

Sermon: Rabbi Posner

Parashat Va-y'chi

(Genesis 47:28-50:26)

Read Saturday, December 18

Synopsis: Joseph promises to bury Jacob in Canaan; Jacob blesses Joseph's sons; Jacob speaks last words to his sons; Jacob dies and is buried; Joseph forgives his brothers; Joseph dies.

Sermon: Rabbi Zeidman

Parashat Sh'mot

(Exodus 1:1-6:1)

Read Saturday, December 25

Synopsis: Israelites enslaved by new Pharaoh; Moses is born; Moses flees to Midian; God calls Moses at the burning bush; Moses discovers ability to do miracles; Moses returns to Egypt; Moses and Aaron ask Pharaoh to let people go pray in the wilderness; in response, Pharaoh increases workload of Israelite slaves.

Sermon: Rabbi Posner

Worship & Spirituality



CHANUKAH

Congregational Celebration

Friday, December 3 • 5:15 PM •

Temple Sanctuary (Fifth Avenue at 65th Street)

OUR CONGREGATIONAL CHANUKAH SERVICE will feature the Temple Emanu-El Choir, as well as the Junior Choir, singing from the bimah. A candle will be lit for the third night of the holiday. A festive *Oneg Shabbat* with traditional Chanukah treats will follow. Religious School families are invited to a dinner after services.

ON THE TEMPLE WEBSITE: 
(Click "Worship" →
"Holy Days & Festivals" → "Chanukah")

- **View our "Chanukah at Home" section of the website for great suggestions on how to learn about and celebrate the holiday.**
- **Listen to and learn the blessings to be said when lighting the candles.**
- **Download and print the flyer "Eight Ways for an Amazing Eight Days," which offers meaningful suggestions for helping others during the Chanukah season.**



Religious School Dinner

Friday, December 3 • 6:15 PM • One East 65th Street

RELIGIOUS SCHOOL FAMILIES are encouraged to first attend the congregational Chanukah service. See details about the dinner on page 5. (RSVP to the Religious School by November 29.)

Young Families Celebration

Sunday, December 5 • 10 AM • 10 East 66th Street

JOIN US FOR our annual Chanukah party—complete with food, treats, arts and crafts, and stories! Families are encouraged to bring a *chanukiyah* from home to participate in a community candle-lighting ceremony (candles provided). RSVP to (212) 744-1400, ext. 242 or youngfamilies@emanuelnyc.org.



ASK THE ETHICISTS

*Relationships...
What to Do When...?*

**Tuesday, December 7 • 7:30 PM •
Leon Lowenstein Sanctuary (10 East 66th Street)**

OUR LIVES ARE an endless series of encounters with other people. Often, these are productive, satisfying and meaningful. From time to time, though, relationships we care about confront us with profound dilemmas.

Moral or ethical quandaries can erupt in love or business relationships, with life-partners, parents, children, co-workers, doctors, lawyers, rabbis and so on. In an evening of probing and thought-provoking discussion, *New York Times Magazine*

ethicist **Randy Cohen** and *Jewish Week* ethicist **Rabbi Joshua Hammerman** will offer guidance on managing tough, real relationship questions. Members of the audience will be invited to submit (anonymously, of course) relationship questions that have interrupted their otherwise serene lives.



RANDY COHEN has written humor articles, essays and stories for numerous newspapers and magazines, including *The New Yorker*, *Harper's* and *The Atlantic*. He also is the author of *The Good, The Bad & The Difference: How to Tell Right From Wrong in Everyday Situations*.



RABBI JOSHUA HAMMERMAN has been the spiritual leader of Temple Beth El in Stamford, Conn., since 1992. His articles and essays have appeared widely, and his column, "On One Foot," appears regularly in *The Jewish Week of New York*.

This event is co-sponsored by Temple Emanu-El and *The Jewish Week*. It will be moderated by Gary Rosenblatt, editor and publisher of *The Jewish Week*. Attendance is free and open to the public.

SKIRBALL



SUNDAY SEMINARS

Cost is \$60 per person, per seminar. Sessions are open to the public. Enter at One East 65th Street. Register by calling (212) 507-9580.

**Human Rites:
The Rituals of Change**

Rabbi Adina Lewittes

December 12 •

12 PM - 4 PM

Where is my tradition when I'm facing a changing body and an aging mind? How can I harness the wisdom and creativity of my Judaism to mark milestones previously ignored by Jewish custom? How do Jewish life-cycle rituals address transitional moments for Jews in modern societies?

TORAH COMMENTARY

Get more out of the Torah! Read our weekly Torah commentary, written by our clergy and Temple staff, on the Emanu-El website: www.emanuelnyc.org.

Follow the link from the Home Page.



Previous commentaries can be read through the archive.

WEEKLY TORAH STUDY

Our Sabbath morning Torah Study explores the weekly *parashah* from a variety of perspectives. Join us from 9:15 AM to 10:15 AM in the Cassell Community House, One East 65th St. No previous knowledge is required.

**BOOK
DISCUSSION
GROUPS**



MEN'S CLUB

December 8 • 8:45 AM

We will discuss *The Jewish Husband* by Lia Levi, a tender love story set in wartime Italy, when the country was ruled by Mussolini's oppressive racial laws. The novel, written with sensitivity and insight, won the Alberto Moravia Prize for Literature, when it was published in Italy. (Source: *The Jewish Woman Magazine*)

**STETTENHEIM
LITERARY CIRCLE**

December 15 • 6:30 PM

Take chocolate candy, add a family business at war with itself and stir with an outsider's perspective. This is the recipe for *True Confections*, the irresistible new novel by Katharine Weber. Richly informed, deeply moving and spiked with Weber's trademark wit, *True Confections* is, at its heart, a timeless and universal story of love, betrayal and chocolate. (Source: *Publisher's website*)

WOMEN'S AUXILIARY

January 4 • 12:30 PM

Rabbi Alfredo Bordowski will lead our discussion of *The Prophet's Wife* by Milton Steinberg, a stirring portrait of the biblical prophet Hosea, his passionate and free-spirited wife, Gomer, and a people seduced by the lures of power and idolatry to betray their faith. (Source: *Publisher's website*)

Lectures • Classes • Tours



Beyond the Gatekeepers and Spin: Keeping Public Officials Accountable to the Public

Sunday, December 12 • 10 AM • One East 65th Street

THE MEN'S CLUB cordially invites all Temple members and guests to their December brunch with **Serge Kovaleski**, Pulitzer Prize winning journalist from *The New York Times*. Mr. Kovaleski is a graduate of William & Mary (1984) and began his career at the *Miami News* in the mid-1980s. He also has reported for the *New York Daily News* and *The Washington Post*.



The cost for this event, which includes brunch, is \$30 for Men's Club members and \$35 for all others. RSVP to the Men's Club at (212) 744-1400, ext. 250.

New York Landmarks: Carnegie Hall & Petrossian

**Monday, December 13 • 11:45 AM (Tour starts promptly at noon)
Carnegie Hall, 881 Seventh Avenue (Meet in 57th Street lobby)**

JOIN MEMBERS OF the Women's Auxiliary as they experience the magic of **Carnegie Hall** with a guided tour. Get an insider's view of the concert hall as docents share the story of Carnegie Hall's construction and the legacy of the great artists who have performed there. Participants also will have the opportunity to see parts of the hall not usually open to the general public. After the tour, the magic will continue with lunch at another NYC landmark...**Petrossian**, which is world renown for its caviar, smoked fish and foie gras delicacies.



Photo by Don Perdue

Participation is open to all Temple members and their guests. Cost is \$55 for Women's Auxiliary members, \$65 for all others. RSVP by Wednesday, December 8 to (212) 744-1400, ext. 235 or womaux@emanuelnyc.org.

Religious School



Religious School Chanukah Dinner

Friday, December 3 • 6:15 PM • One East 65th Street

RELIGIOUS SCHOOL FAMILIES are encouraged to attend our congregational Chanukah service, which will feature the Temple Emanu-El Choir singing from the bimah, a performance by the Junior Choir and candle lighting for the third night of the holiday. Dinner for Religious School families will follow.

The cost for dinner is:

- \$35 per family (including two adults) for reservations made by November 29
- \$50 per family after November 29
- \$10 for each additional adult

Charges will be billed to your Emanu-El account and will appear on your next statement. After November 29, cancellations cannot be refunded.

Reservations for dinner are required. RSVP to the Religious School at school@emanuelnyc.org or (212) 744-1400, ext. 226.



Teen Benefit Aids Those in Need



Having raised \$13,300 in April 2010 for Haiti relief efforts of the American Jewish World Service, Temple Emanu-El's Teen Benefit Committee is thrilled to announce the event's return on April 16, 2011. Learn more on the Temple website. Click "Learning" → "Religious School" → "Teen Programs" → "Teen Benefit Committee."



CHANUKAH ASSEMBLIES

Religious School Chanukah assemblies will be held **Sunday, December 5** at **11 AM**; **Monday, December 6** at **5:15 PM**; and **Wednesday, December 8** at **5:15 PM**. Students' families are invited to join us as we celebrate and light the candles. The Junior Choir will perform at the Sunday assembly.

WHY DO WE STAND FOR SOME PRAYERS?

Fourth grade students participating in the Religious School *Tefilah* program were asked to address the above question. Following is a snapshot of their thoughts. What do you think?

- To be "closer" to God.
- Shows that this is an important prayer; we're taking it seriously.
- Shows God that we're not lazy, not a slouch.
- There is an appropriate way to do certain things; this shows that we know how to do it right.
- It makes you a little less comfortable, so it shows that you're willing to be a little less comfortable for God.
- Practical reason: We stand up for ones where we need to bow.

NOTE: Religious School will be closed December 19 through January 3 for Winter Break.

**TIKKUN OLAM
DECEMBER EVENTS**

**HELPING FEED
THE HUNGRY &
WINTER WISHES
WRAPPING PARTY**

December 5 • 12 PM

Two special mitzvot combined in one event! Volunteers will prepare 300 bagged meals of sandwiches and freshly baked cookies **AND** wrap holiday gifts donated by congregants through the



Winter Wishes project initiated at Mitzvah Day.

Preregistration with the Tikkun Olam Committee is required: (212) 744-1400, ext. 452 or tikkunolam@emanuelnyc.org.

**STITCH'N TIME
December 19 • 11 AM**

Temple adults and youth are invited to participate. Sessions meet until 2 PM.

Yarns and patterns are provided, but you must bring your own knitting needles (#8). No prior experience is necessary! Light refreshments served. Enter at One East 65th.

**RONALD MCDONALD
HOUSE DINNER**

December 30 • 5 PM

All potential volunteers (Temple members only) must preregister with the **Women's Auxiliary**; call (212) 744-1400, ext. 235. Must be at least 18 years old and in good health.



Look on the Temple website for other ways to volunteer. Click "Community" → "Volunteer Opportunities."

Community • Volunteering



WOMEN'S AUXILIARY

A Dedicated History of Service

THE GROUP OF Emanu-El women organized as an auxiliary to the Temple in 1922 by Rabbi Hyman Enelow enthusiastically responded to a call early in the 1950s to join the sisterhoods of their Christian and Jewish neighbors in a newly organized group called Interfaith Neighbors. Its purpose was to work in the Yorkville district of the city. Monthly meetings were held in various churches and synagogues, attended by their clergy and many congregants.

A settlement house was established in the East 80s, funded by charitable institutions and foundations.

The Sisterhood women ran a successful luncheon and card party yearly, and with individual fundraising, the sources of income were sufficient to provide tutoring, a library and counseling to many needy teenagers in the district.



Learn more about the Temple's history on our website. Click "About Us" → "History."



This charitable activity flourished for the next several decades until interest waned, and many churches and synagogues dropped out. The Yorkville facility was closed, and a small center for girls only opened in Harlem. A clothing exchange—a needed service—was added there.

The Women's Auxiliary never deserted. A small group of representatives from churches and synagogues banded together, meeting in their houses of worship to view the architecture and to learn their history. Emanu-El women took the lead in hospitality, hosting a luncheon in their domain, and at the Jewish Museum and the Jewish Theological Seminary. Meaningful friendships were formed between Jewish and Christian women. Financial activity was limited to helping the library.

In 2001, the Harlem center was closed. The diversion of city funding discontinued the need to maintain the small group.

Happily, the community welfare work of the Women's Auxiliary continues to make significant contributions through its nonsectarian party for veterans, the Emanu-El Center for Seniors, English tutoring for newly arrived foreigners, and backpacks for needy young school children. The auxiliary always is open to suggestions for new projects.

— *Phyllis Cohen and Jeanne Theodore*

For more information about working with the Women's Auxiliary and how to become a member, call (212) 744-1400, ext. 235, or send an e-mail to womaux@emanuelnyc.org.

College Connection

ARE YOU IN COLLEGE?

Is your child in college?

Temple Emanu-El wants to make sure that college students feel like a part of their Emanu-El community and that they maintain their Jewish heritage. **College Connection** is a loose network of college students who grew up at Emanu-El. We're planning on keeping in touch by providing information about Jewish opportunities all over the country, what's happening at the Temple and low-key events to be held during breaks from school.



Students must complete our online registration form. Click "Community" → "College Connection" on the Temple website. Even if you've registered with us before, we ask that you resubmit the form on a yearly basis so that we're sure to have your most recent college address.



Parent-Child Group



CHILD PSYCHOLOGIST **Dr. Juliet Cooper** and **Rabbi Amy Ehrlich**

will lead a second series of weekly guided discussions for families with young children (18 to 36 months old). New families are invited to join our sessions, which are intended to help parents gain insight into their parenting choices, foster independence and healthy separation, promote understanding of their child's unique temperament and explore Jewish identity. Your child will play in a classroom setting with teachers, which will enable you to learn from real-life, unfolding situations.

Our group will meet on Wednesdays, starting January 19, 2011, from 9:15 AM to 10:30 AM. Cost is \$495 for Temple members, \$575 for nonmembers. Preregistration is required. Send your contact information to parenting@emanuelnyc.org, or call Rabbi Ehrlich's study at (212) 744-1400, ext. 206.

Saviv

ARE YOU A Temple Emanu-El member in your 20s or 30s? Do you know nonmembers who are in their 20s and 30s? Let us know if you are interested in meaningful, innovative and fun programming with **Saviv**, a Jewish community for people who seek to explore authentic, progressive Jewish tradition and practice in an open, inviting atmosphere.



Send an e-mail to info@saviv.org with your name and e-mail address so that we can notify you about upcoming gatherings.



EMANU-EL EATS

With Chanukah just around the corner and thoughts of festive meals to come, it's time to go through your personal recipe collection and pull out your signature recipes, as well as to think about adding some new dishes to the menu. And while you are choosing which recipes to prepare, why not make an extra copy of those very special ones that family and friends always request and send them to **Emanu-El Eats** for inclusion in our cookbook?

Mail them to Emanu-El Eats, c/o Temple Emanu-El, One East 65th Street, NY, NY 10065, or submit them by e-mail to emanueleats@emanuelnyc.org. Include your name, contact information, and a brief explanation of how you devised or came to the recipe and why it is special to you. If it is based on a recipe you found in a cookbook or magazine but you have tinkered with it to make it your own, then please include the original recipe source, and tell us how you've changed it.

We look forward to hearing from you!

View articles and recipes on the Temple website. Click "Community" → "Emanu-El Eats."





CLERGY

Dr. David M. Posner, *Senior Rabbi*
Amy B. Ehrlich, *Associate Rabbi*
Benjamin J. Zeidman,
Assistant Rabbi
Lori A. Corrsin, *Cantor*
Dr. Ronald B. Sobel,
Senior Rabbi Emeritus

OFFICERS

Marcia Waxman, *President*
Joan H. Bright, *Vice President*
Neil B. Cooper, *Vice President*
Karel L. Greenberg, *Vice President*
Robert A. Calinoff, *Secretary*
Stephen T. Shapiro, *Treasurer*

STAFF

Mark W. Weisstuch,
Administrative Vice President
Mark H. Heutlinger, *Administrator*
Robyn W. Cimbol, *Senior Director,*
Development and Philanthropy
Sherry Nehmer, *Asst. Administrator*
Christine Manomat, *Membership*
Saul Kaiserman, *Director,*
Lifelong Learning
Rachel Brumberg, *Asst. Director,*
Lifelong Learning
Rabbi Alfredo Borodowski,
Executive Director, Skirball Center
for Adult Jewish Learning
at Temple Emanu-El
Darone Ruskay, *Skirball*
Managing Director
Ellen Davis, *Director,*
Nursery School
Elizabeth F. Stabler,
Temple Librarian, Ivan M.
Stettenheim Library
Elka Deitsch, *Senior Curator,*
Herbert & Eileen Bernard
Museum of Judaica
Charles S. Salomon,
Funeral Director

—◆—
Kathryn M. Roberts,
Bulletin Editor/Webmaster

Bridge (continued)

bequeathed to the Temple has been created at the Herbert and Eileen Bernard Museum. Special exhibitions featuring New Year's cards, maps of the Holy Land, *ketubot* and other items have shed light on aspects of Jewish expression in new ways and amplified the richness of our culture.

Important educational initiatives also have benefitted from generous financial support. The Skirball Center for Adult Jewish Learning at Temple Emanu-El engages hundreds of students each semester in explorations of texts, history, literature and theology. In addition, endowed lectures and magnificent concerts open to all at no cost are now an integral part of Emanu-El's programmatic year.

More recently, this congregation united to raise more than \$25 million to restore our magnificent sacred space to its original splendor. The Sanctuary's distinctive stained-glass windows have been conserved and preserved; our historic organ has been rebuilt; the infrastructure has been replaced; and all surfaces have been thoroughly cleaned and revitalized. Highly skilled artisans carried out this work...but it was the generosity of our congregation that made such accomplishments possible.

Today, Emanu-El is responding to the changing demographics of our membership by offering opportunities to strengthen connections to Judaism for new constituencies. Some activities are directed to specific groups within the congregation; others serve the wider New York City community. But I know that there is something meaningful available for all who would wish to avail themselves: counsel from and relationships with caring clergy; traditional worship as well as an array

of services, such as Tot Shabbat, Shabbat Kodesh and Saviv; study through our Religious School or the Skirball Center; lectures from the Bernard Museum and Stettenheim Library; volunteering through our *tikkun olam* efforts; and our many musical offerings. These are just some of the ways you can connect through Emanu-El to personally meaningful aspects of Judaism. (Learn about all of these activities and more through our Temple website: www.emanuelnyc.org.)

Emanu-El is responding to [our] changing demographics by offering opportunities to strengthen connections to Judaism.

Our congregation must remain able to expand services and programs as circumstances enable and require. And, while I did not set out to turn this into a fundraising appeal, I must urge you to reflect on the importance of your support. If you have not done so already, then please consider making the most generous gift you can make comfortably to the Annual Fund.

Ethics of the Fathers, Chapter 2, Mishnah 21, teaches us: "It is not your duty to complete the task, but you are not free to desist from it." Please remember that our collective actions today will influence our tomorrow. Your partnership is the bridge that will transform our heritage into our legacy.

What do you think? Share your thoughts on our blog. Click "About Us" → "Publications."



Music Programs



The Arcos Orchestra: Festive Tones

Wednesday, December 8 • 7 PM • Temple Sanctuary

THE ARCOS ORCHESTRA, Temple Emanu-El's orchestra in residence for the 2010-2011 program year, will perform the second of four free concerts in our beautiful Temple Sanctuary. This festive Chanukah concert will feature music by **Samuel Adler**, one of the most prolific American Jewish composers. The program also includes works by **G.F. Handel** and **Bela Bartok**, as well as the world première of a new work by Greek composer **Dimitri Terzakis** and the U.S. première of *Winter's Night* (2009) by French Jewish composer **Nicolas Bacri**.

Admission is free and open to the public. Temple members may call (212) 744-1400, ext. 215 to reserve priority seating. All are invited to a pre-concert lecture with Samuel Adler and Dimitri Terzakis at 6 PM in the Beth-El Chapel. Enter at Fifth Avenue.

Life-Cycle Events



The following student of our Religious School will become a BAT MITZVAH in December:


Saturday, December 4

Savanna Monet Fortgang, daughter of Matthew and Terrie Fortgang


We are grateful for their sponsorship of the Friday evening Oneg Shabbat.

(continued)

MUSIC FOR SABBATH SERVICES


Become familiar with music often performed at Temple Emanu-El during Sabbath services. Our website features Cantor Lori Corrsin and the Temple Emanu-El Choir performing a selection of pieces, accompanied by Scott Warren on the organ. **Click "Worship" → "Music at Emanu-El" → "Music for Sabbath Services."**  MP3 files may be uploaded to your personal audio device, or you can launch the Emanu-El audio player.

COMPOSERS

Learn more about the men and women who have brought us such beautiful works. **Click "Worship" → "Music at Emanu-El" → "Composers."** 

BAR/BAT MITZVAH PREPARATION

Children must be enrolled in Religious School in order to become a bar or bat mitzvah at Emanu-El. A date can be scheduled when a child is in fourth grade or is 10 years old. To register your child for Religious School, call (212) 744-1400, ext. 226. To schedule a date, call Sherry Nehmer at (212) 744-1400, ext. 312.

Families are encouraged to make use of bar/bat mitzvah resources available on the Temple website. **Click "Learning" → "Religious School" → "Bar & Bat Mitzvah Program."** 

OF BLESSED MEMORY

At the time of death, as well as during a period of illness, family members need the comfort, support and caring of a community. Temple Emanu-El's clergy and staff always are available to help soothe these difficult hours.

Because there are many ways to honor a loved one, the rabbis and cantor can provide guidance that is suited to your family's personal philosophy. Call (212) 744-1400.

REMEMBERING LOVED ONES

Have the name of a loved one recited during our daily *Kaddish*. Temple Emanu-El's Sunset Service is held Sunday through Thursday in Greenwald Hall of the Marvin and Elizabeth Cassell Community House, One East 65th Street. Participation is open to the public.

WOMEN'S AUXILIARY TRIBUTE FUND

Commemorate significant life-cycle events and support Women's Auxiliary activities at the same time. All donations are listed in *Window on Emanu-El*. Call (212) 744-1400, ext. 235.

A REMINDER ABOUT SPONSORSHIPS

Because the Emanu-El *Bulletin* is a monthly publication, please be advised that we need one month's notice for Pulpit Flower dedications and *Oneg Shabbat* sponsorships. Call Sherry Nehmer at (212) 744-1400, ext. 312.

PULPIT FLOWERS at worship services have been donated by the following congregants:

For the Sabbath of December 3 and 4

The Harteveltdt Family in loving memory of
Henry H. Harteveltdt, Jr. and Lucile S. Harteveltdt

Emily Fisher Landau in memory of my beloved sons
M. Anthony Fisher and Richard L. Fisher

Monte Wolfson in loving memory of his wife, *Doris Wolfson*.

For the Sabbath of December 10 and 11

Karel, Frank, Danielle and Alix Greenberg
in loving memory of *Lillian and Marvin Greenberg*

Barbara and Eugene Kummel in loving memory of our parents,
Florence and Max Kummel & Aida and Abraham Wiener

Bonnie, David, Richard, Nancy and Gail Maidman
in loving memory of *William Maidman and Lea Maidman*

For the Sabbath of December 17 and 18

Mrs. A. Coleman Poll in loving memory of her parents,
Mildred and Jacques G. Coleman, and her grandmother *Sophie Brock*

Denny and Alex Rein and Nicki Rein Shalette
in loving memory of *Mark Alan Rein*

For the Sabbath of December 24 and 25

Mary Louise Fleur in loving memory of
her mother, *Mary Cisterma Schwartz*

Barbara Slifka in loving memory of her mother, *Sylvia Slifka*

For the Sabbath of December 31 and January 1

Rhoda Weiskopf Cohen in loving memory of
my dearest husband and best friend, *Herbert George Cohen, M.D.*

Charles S. Salomon
The Universal
Funeral Chapel
1076 Madison Avenue
(212) 753-5300
Our service is available in the
Temple, home or our Chapel.

The Cemeteries of Congregation Emanu-El
Salem Fields and Beth-El
A limited number of above-ground crypts are
available in our community mausoleum.
For information, please call Dr. Mark W. Weisstuch
at the Temple Office, (212) 744-1400.

At a Glance: December 2010



**December 3
Friday, 5:15 PM**
*Congregational
Chanukah Service*
Temple Sanctuary (Fifth Ave.)



**December 3
Friday, 6:15 PM**
*Religious School
Chanukah Dinner*
One East 65th Street



**December 4
Saturday, 8:30 AM - 2 PM**
*Mitzvah Corps:
Unit 4 Action Session
(Special Olympics)*
Mark Twain Sports Complex,
Yonkers, NY (Buses depart
from One East 65th Street)



**December 5
Sunday, 9:30 AM**



**December 8
Wednesday, 4 PM**
*Mitzvah Corps:
Unit 4 Reflection Session*
10 East 66th Street



**December 5
Sunday, 10 AM**
*Young Families
Chanukah Celebration*
10 East 66th Street



**December 5
Sunday, 11 AM**
*High School
Confirmation: Step 4*
One East 65th Street



**December 5
Sunday, 11 AM**



**December 6
Monday, 5:15 PM**



**December 8
Wednesday, 5:15 PM**
*Religious School
Chanukah Assemblies*
10 East 66th Street



**December 5
Sunday, 12 PM**
*Helping Feed the Hungry
& Winter Wishes
Wrapping Party*
10 East 66th Street



**December 5
Sunday, 4 PM**
*Lirdof Tzedek
Sunday Seminar*
One East 65th Street



**December 7
Tuesday, 7:30 PM**
Ask the Ethicists
10 East 66th Street



**December 8
Wednesday, 8:45 AM**
Men's Club Book Group
One East 65th Street



**December 8
Wednesday, 6 PM/7 PM**
*Arcos Orchestra:
Festive Tones*
Beth-El Chapel (Fifth Avenue)
and Temple Sanctuary



**December 12
Sunday, 10 AM**
*Men's Club Brunch:
Serge Kovaleski*
One East 65th Street



**December 12
Sunday, 12 PM - 4 PM**
*Skirball Sunday Seminar:
Rituals of Change*
One East 65th Street



**December 13
Monday, 11:45 AM**
*Women's Auxiliary:
New York Landmarks*
Carnegie Hall, 881 Seventh Ave.
(Meet in 57th Street lobby)



**December 15
Wednesday, 4:10 PM**
*Lirdof Tzedek
Volunteer Session 3*
Association to Benefit Children
(1841 Park Ave. at 126th St.)



**December 15
Wednesday, 6:30 PM**
*Stettenheim
Literary Circle*
One East 65th Street



**December 19
Sunday, 11 AM**
*Tikkun Olam:
Stitch'n Time*
One East 65th Street



**December 30
Thursday, 5 PM**
Ronald McDonald House
405 East 73rd Street



Book Discussion



Community • Volunteering



Lecture • Class • Tour



Meeting



Musical Program



Panel Discussion



Religious School Event



Worship & Spirituality



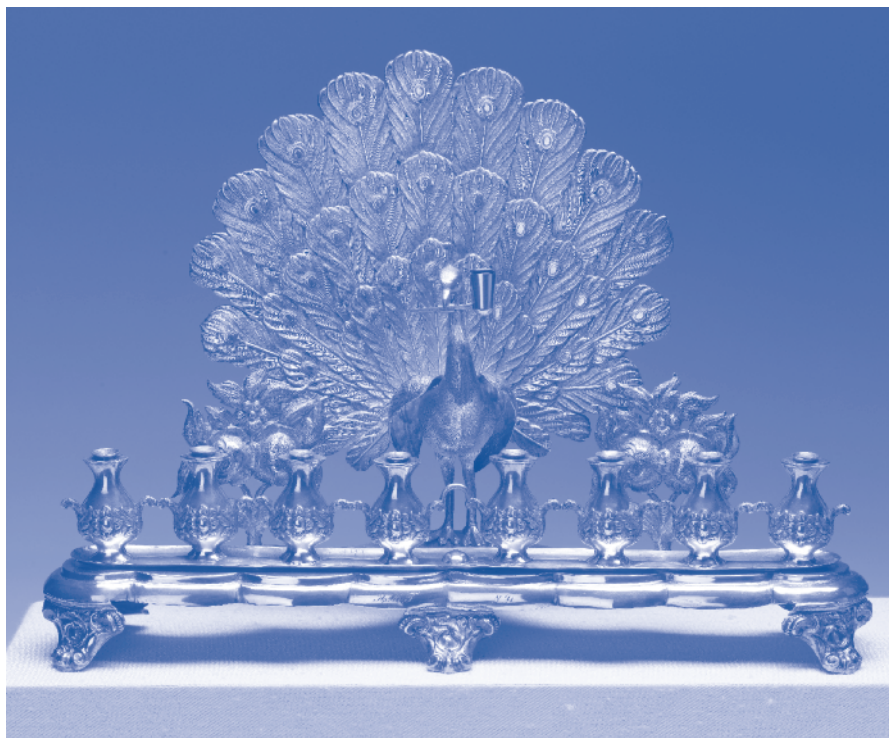
Young People's Program

TEMPLE EMANU-EL BULLETIN

Vol. 83, No. 4
December 2010

CONGREGATION EMANU-EL
of the City of New York
One East 65th Street, New York, NY 10065
(212) 744-1400 • www.emanuelnyc.org

INSERT
INDICIA
HERE



HERBERT & EILEEN BERNARD MUSEUM

Object of the Month

**Peacock Chanukah Lamp
Vienna, 1862**

***Gift of Mr. and Mrs.
Henry M. Toch, 1928***

(CEE 29-1)

Learn more about this unique
Chanukah menorah and the meaning of
the peacock on the Temple website.
Click "Museum" →
"Collection Highlights."

