

# Temple Emanu-El Bulletin



## IMPORTANT REMINDER: MEMBERSHIP SURVEY

Congregants, help us make your experience with us more meaningful and satisfying. Please participate in our e-mail membership survey that will be sent in December. If you have not yet given us your e-mail address, then call the Temple Office at (212) 744-1400, ext. 215. Addresses will be used only for Temple communications.

## WORSHIP SERVICES

### SUNDAY — THURSDAY

5:30 PM • Marvin & Elisabeth  
Cassell Community House  
(One East 65th Street)

### FRIDAY EVENING

Sanctuary (Fifth Avenue at  
65th Street)

Organ Recital—5 PM  
Service Begins—5:15 PM  
WQXR Radio (105.9 FM) and  
Internet ([www.wqxr.org](http://www.wqxr.org))  
broadcasts—5:30 PM

### SATURDAY MORNING

Sixth Floor Lounge  
(One East 65th Street)

Torah Study—9:15 AM  
Sanctuary (Fifth Ave. at 65th)  
Organ Recital—10:15 AM  
Service Begins—10:30 AM

Services also may be heard  
at [www.emanuelnyc.org](http://www.emanuelnyc.org).

Hearing loop in Sanctuary  
and Beth-El Chapel; switch  
aid to T-coil. Headsets or  
neck loops also available.



## Chanukah: Bringing Light

By Rabbi Howard J. Goldsmith



I HAVE FOND MEMORIES of lighting Chanukah candles with my parents and grandparents. I can remember sitting in our living room when I was a small child and gazing past the candles to the window to watch

the snow fall into the backyard. In those memories, Chanukah lives as a festival of light in the midst of the cold, dark winter.

As with so many of our holy days and festivals, the traditions and practices of Chanukah have roots that go back beyond Judaism, into the most primordial of human impulses—in this case, the desire for light over darkness. Generations of Jews overlay this festival of light with meaning particular to Jewish experience and theology. That first layer of particular meaning was a celebration of military victory: The Maccabees defeated the mighty Syrian-Greeks. Upon recapturing Jerusalem:

*Judas and his brethren with the whole congregation of Israel ordained that the days of the dedication of the altar should be kept in that season from year to year for eight days, from the five and twentieth day of the month Kislev, with mirth and gladness.*

— I Maccabees, Chapter 4  
(circa 100 B.C.E.)

This first overlay of meaning is all about military victory, national pride and celebration. A few centuries later, the Rabbis had a problem with this meaning for Chanukah because there was no longer a Jewish state or a Jewish army. They hoped not for a military redemption but a religious one. And so, they put a spiritual overlay onto our festival of light:

*When the Greeks entered the Temple, they defiled all the oils. When the Hasmonean dynasty defeated them, they searched and found only one cruse of oil which lay with the seal of the High Priest. Yet, it contained enough for one day's lighting; yet a miracle was wrought and they lit [the lamp] for eight days. The following year these [days] were appointed a Festival.*

— Talmud, Shabbat 21B  
(circa 400 C.E.)

continued on page 3

## WEEKLY TORAH PORTION

### **Parashat Vayishlach**

(Genesis 32:4-36:43)

*Read Saturday, December 5*

Jacob sends gifts to Esau; Jacob wrestles at Peniel and receives new name, Israel; Jacob and Esau reconcile; rape of Dina; brothers retaliate; birth of Benjamin; death of Rachel and Isaac.

**Sermon: Rabbi Posner**

### **Parashat Vayeishev**

(Genesis 37:1-40:23)

*Read Saturday, December 12*

Joseph's dreams of greatness; brothers sell Joseph into slavery; Tamar tricks Judah into impregnating her; Potiphar's wife attempts to seduce Joseph; Joseph is jailed; Joseph interprets two prisoners' dreams.

**Sermon: Rabbi Goldsmith**

### **Parashat Mikeitz**

(Genesis 41:1-44:17)

*Read Saturday, December 19*

Joseph interprets Pharaoh's dream; Joseph appointed prime minister of Egypt; Joseph's brothers go to Egypt to seek food; brothers return to Canaan to fetch Benjamin; Joseph frames and detains Benjamin.

**Sermon: Rabbi Posner**

### **Parashat Vayigash**

(Genesis 44:18-47:27)

*Read Saturday, December 26*

Judah pleads for Benjamin's freedom; Joseph reveals himself to his brothers; Jacob brings family to Egypt, settles in Goshen; Joseph governs during famine in Egypt.

**Sermon: Rabbi Ehrlich**

## Worship & Spirituality



# Congregational Chanukah Service

**Friday, December 11 • 5:15 PM • Sanctuary (Fifth at 65th St.)**

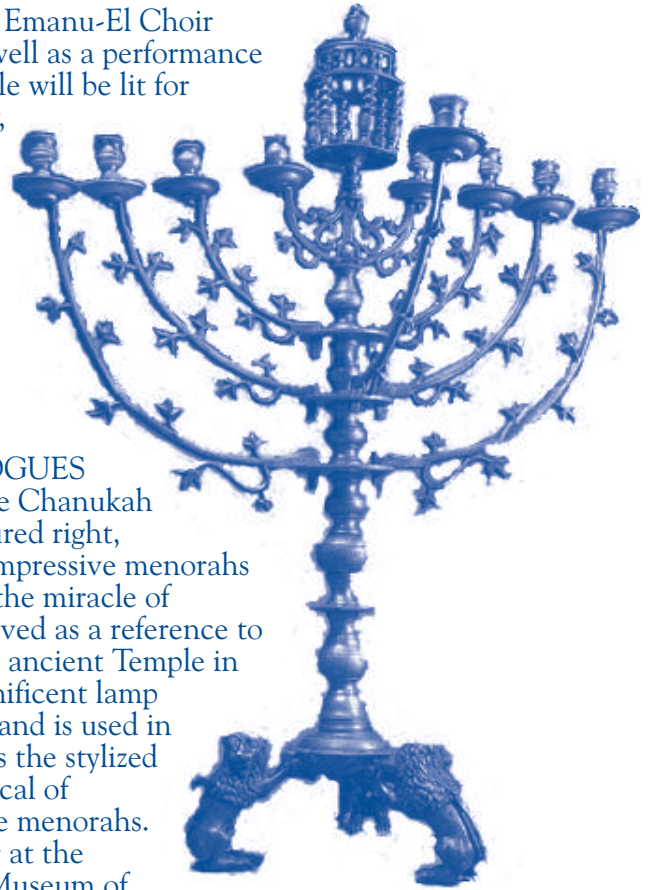
**O**UR CONGREGATIONAL SERVICE will feature the Temple Emanu-El Choir singing from the bimah, as well as a performance by our Junior Choir. A candle will be lit for the first night of the holiday, and a festive *Oneg Shabbat* with traditional Chanukah treats will follow.

**Image right:**  
**SYNAGOGUE**  
**MENORAH**

*Poland, 17th century*  
*Cast brass*

### ASHKENAZIC SYNAGOGUES

**A** often placed large-scale Chanukah lamps, such as the one pictured right, near the Torah ark. These impressive menorahs were not only reminders of the miracle of Chanukah, but they also served as a reference to the menorahs housed in the ancient Temple in Jerusalem. Emanu-El's magnificent lamp measures nearly 5 feet high and is used in the Temple Sanctuary. It has the stylized scrollwork and lion feet typical of Eastern European synagogue menorahs. View it during Chanukah or at the Herbert & Eileen Bernard Museum of Judaica. Admission is free and open to the public, Sunday through Thursday from 10 AM to 4:30 PM. (212) 744-1400, ext. 259



## CHANUKAH ON THE WEB



- Read our "Chanukah at Home" section of the Web site for great suggestions on how to learn about and celebrate the holiday. Click "Worship" → "Holy Days & Festivals" → "Chanukah" → "Chanukah at Home."
- Listen to and learn the blessings to be said when lighting the candles. Click "Worship" → "Holy Days & Festivals" → "Chanukah" → "Lighting the Candles."
- Add meaning to your holiday celebration by following suggestions for charitable giving. Click "Worship" → "Holy Days & Festivals" → "Chanukah" → "Chanukah Giving."

---

---

## Year-End Giving: Rewarding Gifts, Beneficial Gifts

**N**OWHERE IS THE harmony of American and Jewish values more evident than in philanthropy. In our faith, *tzedakah* is an obligation. At tax time, it is rewarded because our nation's laws continue to provide tangible incentives for charitable gifts.

Year-end is a time for reflection and looking to the future. It also is a time when we are prompted to make important decisions about charitable contributions. Through our donations, we seek to make a meaningful difference for institutions and organizations that matter to us. We urge you to make a gift to the 2009-2010 Annual Fund if you have not done so already and to add to your current gift if you can.

Ultimately, charitable giving is more than tax brackets and deductions.

Through our philanthropy, we make powerful statements about what matters to us while simultaneously helping to strengthen those values. Gifts to the Annual Fund make a real difference to the Temple. By supplementing membership dues and providing essential operating funds, the Annual Fund enables Emanu-El to build for the future by responding to present needs.

As a donor, you can expect to derive personal satisfaction from your giving. There are even some ways to make a gift that will return a guaranteed income to you for life, at rates greater than you may have thought possible. Call Robyn Cimbol, senior director of development and philanthropy, at (212) 744-1400, ext. 324 for specific suggestions about maximizing the effectiveness of your donations.

## Bringing Light (continued)

With this new layer of meaning, our festival now celebrated not only a military victory but also a miracle.

Celebration of Jewish peoplehood and culture, as well as our relationship with God each play an important role in the life of a Jew. Exploring all of these areas brings the full potential of Jewish life into focus, and each year, Chanukah offers us a way to rededicate ourselves to that exploration. Yet, the pull of this festival's origin, the pull of a holiday of light amid winter darkness, is irresistible. These lights bring comfort, but they also demand something from us; they challenge us to bring light into the world.

As we gaze at the candles this year, let us hear this challenge implicit in their glow. May we learn to push back the cold and bring warmth to our families and community. As the lights increase each night, let us bring the added glow of empathy to the cold streets of our city. In this season of joy, we can illuminate the lives of those less fortunate than ourselves with enduring generosity. And, finally, may the lights of our Chanukah menorahs reveal paths to peace for the entire human family.

**What do you think?  
Share your thoughts on  
our blog. Click "About Us" →  
"Publications."**



### **TOT SHABBAT Saturday, December 12 10 AM • One East 65th**

Our Chanukah Tot Shabbat will be filled with light and joy, latkes and jelly donuts. Come sing and dance with us. Listen to the story of the Mighty Maccabees. Bring your menorah for our candle lighting. (Put your name on the bottom.) Add a small, unwrapped gift to our toy drive. (Toys should be suitable for a child up to age 12.) RSVP to Young Families by noon on Friday, December 11; call (212) 744-1400, ext. 242. Family and friends are welcome. Kindly, let us know how many to expect.

### **EMANU-EL IN FLORIDA**

Plans are underway for another "Emanu-El Shabbos Dinner" in Palm Beach. Our five previous dinners were unforgettable, and we would love to have you with us this year. Temple members who plan to be in Florida in mid-January and would like to attend should call Robyn Cimbol, senior director of development and philanthropy, at (212) 744-1400, ext. 324. If you requested an invitation for an earlier dinner, then you automatically will receive an invitation again.

### **INTERNET SERVICES**

Worship services can be downloaded from the Emanu-El Web site or listened to through the Emanu-El Audio Player. Click "Worship" → "Broadcast of Services."

## Young People's Programs



### HIGH SCHOOL CONFIRMATION: STEP 4

Our subject is "Confronting what seems impossible."

The session will include a workshop to provide students with the confidence and skill to "go forward" when faced with life's biggest challenges.

We will meet on **Sunday, December 6** at **4 PM** in the Marvin and Elisabeth Cassell Community House, One East 65th Street. Dinner will be served. (212) 744-1400, ext. 329

### FAMILY MISSION TO ISRAEL:

**December 23 —  
January 3**

Rabbi Howard Goldsmith and Lifelong Learning Director Saul Kaiserman once again will lead our family trip to Israel. This journey is a great opportunity to form deeper bonds with Judaism, the State of Israel, our Emanu-El community and each other! Even if you can't attend, keep track of the group's activities through our online travel journal. Click "Learning" → "Youth & Young Adults" → "Family Mission to Israel."

### RELIGIOUS SCHOOL FAMILY/STUDENT DIRECTORY

Copies of this resource have been sent to Religious School families in the mail. Please take a moment to check your child's listing, and let us know if any changes are needed for your family's contact information. (212) 744-1400, ext. 226

## CELEBRATING CHANUKAH

### Religious School Chanukah Dinner

**Friday, December 11 • 6:30 PM • One East 65th Street**

**R**ELIGIOUS SCHOOL FAMILIES are encouraged to attend our congregational Chanukah service, which will feature the Temple Emanu-El Choir singing from the bimah, the Emanu-El Junior Choir and candle lighting for the first night of the holiday. Dinner for Religious School families will follow the service.

The cost for dinner is:

- \$35 per family (including two adults) for reservations made by Monday, December 7.
- \$50 per family after December 7.
- \$10 for each additional adult.

Charges will be billed to your Emanu-El account. Fees will appear on your next Emanu-El statement. After December 7, cancellations cannot be refunded.

Reservations for dinner are required. RSVP to the Religious School by calling (212) 744-1400, ext. 226 or sending an e-mail to [school@emanuelnyc.org](mailto:school@emanuelnyc.org).



### Chanukah Sleepover Friday, December 11 6:30 PM • One East 65th

Fifth and sixth graders are invited to spend the night with classmates inside our beautiful synagogue, exploring its secrets and mysteries during an evening filled with food, fun and surprises. (212) 744-1400, ext. 334

### Young Families: Tot Shabbat Saturday, December 12 10 AM • One East 65th

For our preschool through second grade families, we offer a creative

and age-appropriate service that incorporates singing, movement and storytelling. See details, page 3.

### Family Chanukah Assemblies Sunday, Dec. 13 • 11:15 AM Monday, Dec. 14 • 5:15 PM Wednesday, Dec. 16 • 5:15 PM 10 East 66th Street

During our last week of classes before winter break, we will end each Religious School day with a Chanukah Family Assembly that includes candle-lighting services. Parents are invited to attend. Our Emanu-El Junior Choir will perform on Sunday. (212) 744-1400, ext. 226



## MOVERS AND SHAKERS

More than 200 members of our community attended the Religious School Sukkot Family Worship Service and Dinner. From the youngest students shaking their lulavs under our magnificent sukkah to the teens who stayed the night as part of the Sukkot Sleepover—and for all the rest of us who ate and danced the evening away—the mitzvah of celebrating during the holiday of Sukkot clearly was achieved!

## Film Screening



## Waiting for Armageddon

**Tuesday, December 1 • 7:30 PM • JCC in Manhattan  
(334 Amsterdam Ave. at 76th Street) • Cost: \$10 per person**

SKIRBALL'S "MOVIE NIGHT" is held in conjunction with the Jewish Community Center in Manhattan and is made possible in part by a generous contribution from the Schwarzhaupt-Levite Video Fund of Congregation Emanu-El. **Waiting for Armageddon** explores America's 50-million-member Evangelical community, a group convinced that the world's future is foretold in biblical prophecy. By interweaving Christian Zionist, Jewish and critical perspectives, the film probes the politically powerful and potentially explosive alliance between Evangelical Christians and Israel. After the movie, Dr. David Elcott will lead a discussion about "We Know What God Wants": A Conversation on *Religious Fundamentalism and the Land of Israel*. (212) 507-9580



## BOOK DISCUSSION GROUPS

### MEN'S CLUB

All Temple members are invited to join in the monthly discussion group organized by the Men's Club. Sessions meet at 9 AM at the Marvin and Elisabeth Cassell Community House.

#### Upcoming Dates:

**Wednesday, December 9**

*My Father's Paradise*  
by Ariel Sabar

**Wednesday, January 13**

*Good Book* by David Plotz

### STETTENHEIM LITERARY CIRCLE

A new endeavor this year, the Stettenheim Literary Circle, facilitated by Temple Librarian Elizabeth Stabler, focuses on novels. Although most selections have Jewish content, not all do. Sessions meet at 6:30 PM in the Stettenheim Library. (Enter at One East 65th Street.)

#### Upcoming Dates:

**Wednesday, December 16**

*Khirbet Khizeh* by S. Yizhar

**Wednesday, January 20**

*The Book of Dahlia*  
by Elisa Albert

### EMANU-EL READS

This year's selection is *Good Book: The Bizarre, Hilarious, Disturbing, Marvelous, and Inspiring Things I Learned When I Read Every Single Word of the Bible* by David Plotz. Learn more on the Temple Web site. Click "Learning" → "Adult Education" → "Emanu-El Reads."



**JEWISH LIFE,  
JEWISH LEARNING**

**WHAT'S COOKIN'?**

Holiday celebrations always have been focused around the table. Food nourishes, comforts and inspires. Think of Grandma's kugel or Aunt Sara's matzah ball soup, and you'll agree that food may create memories that transcend time.

**Rabbi Amy Ehrlich** and **Rachel Brumberg**, assistant director of Lifelong Learning, will lead us in preparing sweet recipes from Jewish communities worldwide. In addition to making and tasting, we'll explore how these foods have become part of the holiday tradition.

**Our pre-Chanukah class meets Tuesday, December 1 at noon. Enter at One East 65th. Register by calling (212) 744-1400, ext. 303.**

**CHANTING OF THE TORAH AND HAFTARAH: TROP/CANTILLATION**

Trop is the musical language of the Torah; haftarah is the weekly supplemental readings from Prophets and Writings. Every word, sung with different melodies but the same underlying structure, has a musical/grammatical symbol that helps us chant, punctuate and interpret the text.

**Cantor Lori Corrsin** leads this two-part series of classes. **Torah sessions meet Mondays at 6:15 PM (December 7, 14, 21, 28); haftarah sessions meet Wednesdays at 12:30 PM (December 2, 9, 16, 23).**

**Lectures • Classes • Tours**



**SKIRBALL SUNDAY SEMINAR**

*Who's Eve? Whose Eve? Biblical, Midrashic and Poetic Images of Eve*

**Sunday, December 6 • 10 AM to 2 PM • One East 65th Street  
Lecturer: Dr. Anne Lapidus Lerner • Cost: \$60 per person**

**T**HE BIBLICAL EVE engenders controversy, as she has for millennia, often serving as a tool to suppress women. But there are other sides to her story. Is she an afterthought or integral to the creation of humans? Does she seduce or guide? We will hear her voice and follow her in the Garden of Eden and beyond, delving into the biblical text, Rabbinic Midrash and modern poetry to uncover an Eve who inspires.

Sunday Seminars, sponsored by the Skirball Center at Temple Emanu-El, are open to the public. Please register by calling (212) 507-9580.

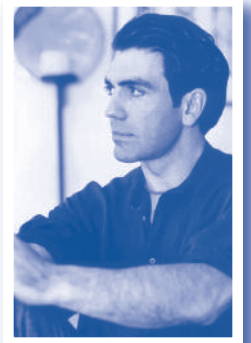
*The Artistry of Michael Aram*

**Monday, December 7 • 3 PM • 136 West 18th Street**

**J**OIN THE WOMEN'S AUXILIARY for a private tour with internationally renowned designer **Michael Aram** at his flagship store. Mr. Aram, an American-born master of decorative arts, will speak about his works and inspirations. He spends much of his time in India, where he designs and produces objects ranging from tableware to home furnishings.

His vast array of Judaica will be on display. A wine reception will follow; we also will receive a 20 percent discount on all purchases. Attendance is limited.

Cost is \$35 for Women's Auxiliary members, \$40 for other Temple members and their guests. RSVP to (212) 744-1400, ext. 235 or [womaux@emanuelnyc.org](mailto:womaux@emanuelnyc.org).



*Eight Nights of Light*

**Sunday, December 13 • 10 AM • 10 East 66th Street  
Wednesday, December 16 • 4 PM • 10 East 66th Street**

**F**AMILIES OF FIFTH GRADE Religious School students are invited to participate in an exciting new program. In honor of the "Festival of Lights," we will explore the special role of light in Judaism, delve into the story of Chanukah and learn about creative holiday celebrations. Come study as a family; then stay to celebrate with our school during the Chanukah Assembly. Questions? Call Coordinator of Elementary and Family Learning David Wolkin at (212) 744-1400, ext. 334.

---

---

## IDENTITY THEFT, INFORMATION SECURITY AND TERRORISM

### *The Hidden War on America*

Sunday, December 13 • 10 AM • One East 65th Street



**JOSEPH DeMARCO**, a leading authority on computer and identity theft, a former U.S. assistant district attorney for the Southern District of New York, and co-founder of its computer hacking and intellectual property unit, will be the guest speaker for this month's Men's Club brunch. The cost for this event is \$30 for Men's Club members, \$40 for nonmembers. Make checks payable to the Men's Club of Congregation Emanu-El.

RSVP by Wednesday, December 9:  
(212) 744-1400, ext. 250 or  
mensclub@emanuelnyc.org.

### *Prague in the Time of the Maharal*

Sunday, December 13  
10:30 AM  
One East 65th Street

**THIS YEAR MARKS** the 400th anniversary of the death of **Rabbi Judah Loew ben Bezalel**, also known as the **Maharal** (c. 1526-1609). **Arno Parik**, author of *Prague Synagogues* and director of exhibitions for the Prague Jewish Museum, will trace the development of the Prague ghetto and the Jewish cemetery during the lifetime of this historic and legendary figure.



Sponsored by the Herbert & Eileen Bernard Museum of Judaica and the Harry G. Friedman Society of Judaica Collectors, this event is free and open to Temple members and guests.  
(212) 744-1400, ext. 259

Grave of Rabbi Judah Loew ben Bezalel



#### A TOAST TO LEARNING

Did you know that more than 200 members of Temple Emanu-El have studied at our own Skirball Center? That is something to celebrate, *and we did*—with a champagne reception to mark the beginning of Skirball's ninth academic year, now in progress.

**Dr. David M. Posner**, who had been called out of town, sent his congratulations and reminded us that he is an enthusiastic member of the Skirball faculty. His course, *Pirkei Avot: A Study of Mishnaic Hebrew*, is one of the many exciting offerings this semester.

**Rabbi Amy Ehrlich** spoke of the many ways in which the Skirball Center has enhanced life at Temple Emanu-El, by creating a cadre of Temple members who care deeply about Jewish learning.

**Rabbi Leon Morris**, Skirball's executive director, praised Temple members' commitment to learning by welcoming new students and recognizing those who have taken courses at Skirball since it opened in 2001. Some were astonished to learn that they had taken 20 or 30 courses over the years.

**Don't miss the chance to experience all that Skirball has to offer. Registration for our winter semester begins in December. (212) 507-9580**



## WINTER WISHES

Just a reminder... Gifts for "Winter Wishes" are due back at the Temple no later than **Saturday, December 12**. Please make sure your gift is in a bag clearly marked "Winter Wishes" and that you have provided the tracking number and child's name. Questions? Call (212) 744-1400, ext. 452.

## CAPS FOR TROOPS

Experienced knitters are needed for an at-home project. We are making warm hats that will be shipped to our troops overseas for use under their helmets. Knitting instructions can be downloaded from the Temple Web site (Click "Community" → "Volunteer Opportunities" → "For the Troops" → "Caps for Troops") or obtained by calling Rabbi Ehrlich's study at (212) 744-1400, ext. 206.

## HELPING THE HOMELESS

Over the past 10 months, the women of **Stitch'n Time** knitted 160 scarves and hats that were distributed on Mitzvah Day to recipients of **Sunday Lunch Program** meal bags. By continuing this partnership, we hope to make the coming winter months a bit easier for more than 150 men and women who turn to Emanu-El for help each week. Temple members interested in volunteering should call (212) 744-1400, ext. 452. No prior knitting experience is necessary.

## TIKKUN OLAM

All Tikkun Olam volunteer projects require preregistration to [tikkunolam@emanuelnyc.org](mailto:tikkunolam@emanuelnyc.org) or (212) 744-1400, ext. 452.

## Holiday Pantry Sort and Toy Sort

**Saturday, December 12 • 10 AM to 1 PM**  
**Yorkville Common Pantry**  
**8 East 109th Street (off Fifth Avenue)**

**VOLUNTEERS WILL** pre-pack and distribute "food bags" for 1,600 New York City families, as well as sort holiday toy donations. This activity is suitable for adults and children 10 years and older with an adult partner.



## Helping Feed the Hungry and Winter Wishes Wrapping Party

**Sunday, December 13 • 12 PM**  
**10 East 66th Street (Blumenthal Hall)**



**TEMPLE MEMBERS** are invited to participate in two special mitzvahs: preparing bagged meals of sandwiches and freshly baked cookies **AND** wrapping holiday gifts donated by congregants through the "Winter Wishes" program (see sidebar) initiated at Mitzvah Day. Adults, teens and families are welcome.

## Stitch'n Time: Emanu-El's Knitting Program



**Sunday, December 20 • 11 AM to 2 PM • One East 65th Street**

**YARN, PATTERNS AND REFRESHMENTS** will be provided. Please bring your own needles (#8). Projects include baby items for low-income and single mothers; hats, scarves and gloves for the homeless; and squares for comfort blankets.

**Community-service certificates are available to Emanu-El teens who participate in volunteer programs. Please call Rabbi Ehrlich's study at (212) 744-1400, ext. 206 for more information.**

---

---

# Ronald McDonald House

Tuesday, December 22 • 5 PM • 405 East 73rd Street

ONCE A MONTH, under the sponsorship of the **Women's Auxiliary**, Emanu-El congregants serve dinner and organize art projects for the families residing at New York City's **Ronald McDonald House** on the Upper East Side. Temple members interested in volunteering must contact the Women's Auxiliary to sign up. This project is suitable only for adults over 18 who are in good health. All volunteers will receive a call back to confirm their volunteer dates. (Please, no walk-ins!) If you cannot join us, then please consider making a donation of desserts, as well as all types of materials for arts and crafts. (212) 744-1400, ext. 235 or [womaux@emanuelnyc.org](mailto:womaux@emanuelnyc.org)



## Tzedakah Banks

THIS YEAR'S RECIPIENT of our **Tzedakah Bank** collection will be **Neve Michael**, a safe haven for Israeli children whose biological parents no longer can care for them. Located in Pardes Hanna, Israel, Neve Michael provides sustenance, education, and a warm and caring environment to needy children between the ages of 3 and 18 years from all over the country.

Banks should be returned to the Temple during the first week of April. Collection is being overseen by **Young Families of Emanu-El**. If you weren't able to pick up a bank during Mitzvah Day, then call Rabbi Ehrlich's study at (212) 744-1400, ext. 206.

[@www.emanuelnyc.org](http://www.emanuelnyc.org)



TEMPLE MEMBERS ARE NEEDED to help with a new community outreach program. **Emanu-El Moments: Stories That Define Our Congregation** will create a mosaic of life at our congregation—a beautiful picture of who we are and what Emanu-El means to us. We ask you to make an audio recording only a few minutes long that offers a snapshot of a special moment with Emanu-El. Whether your family has been a member for four generations or four weeks, we want to preserve your personal reflection. Each recording will be stored in our archive, and a selection will be featured on the congregation's Web site.

Sign up to record a moment of your own by sending an e-mail to [moments@emanuelnyc.org](mailto:moments@emanuelnyc.org), or call Johnny Maldonado at (212) 744-1400, ext. 303. We will contact you to schedule the recording.



### CLERGY

Dr. David M. Posner, *Senior Rabbi*  
Amy B. Ehrlich, *Associate Rabbi*  
Howard J. Goldsmith,  
*Assistant Rabbi*  
Lori A. Corrsin, *Cantor*  
Dr. Ronald B. Sobel,  
*Senior Rabbi Emeritus*

### OFFICERS

Marcia Waxman, *President*  
Joan H. Bright, *Vice President*  
Neil B. Cooper, *Vice President*  
Karel L. Greenberg, *Vice President*  
Robert A. Calinoff, *Secretary*  
Stephen T. Shapiro, *Treasurer*

### STAFF

Mark W. Weisstuch,  
*Administrative Vice President*  
Mark H. Heutlinger, *Administrator*  
Robyn W. Cimbol, *Senior Director,*  
*Development and Philanthropy*  
Sherry Nehmer, *Asst. Administrator*  
Christine Manomat, *Membership*  
Saul Kaiserman, *Director,*  
*Lifelong Learning*  
Rachel Brumberg, *Asst. Director,*  
*Lifelong Learning*  
Rabbi Leon A. Morris,  
*Executive Director, Skirball Center*  
*for Adult Jewish Learning*  
*at Temple Emanu-El*  
Darone Ruskay, *Skirball*  
*Managing Director*  
Ellen Davis, *Director,*  
*Nursery School*  
Elizabeth F. Stabler,  
*Temple Librarian, Ivan M.*  
*Stettenheim Library*  
Elka Deitsch, *Senior Curator,*  
*Herbert & Eileen Bernard*  
*Museum of Judaica*  
Charles S. Salomon,  
*Funeral Director*  
Henry Fruhauf,  
*Hon. Administrative VP*



Kathryn M. Roberts,  
*Bulletin Editor/Webmaster*

## BAR/BAT MITZVAH PREPARATION

Children must be enrolled in Religious School in order to become a bar or bat mitzvah at Emanu-El. A ceremony date can be scheduled when a child is in fourth grade or is 10 years old. To register your child for Religious School, call (212) 744-1400, ext. 226. To schedule a ceremony date, call Sherry Nehmer at (212) 744-1400, ext. 312.

Families are encouraged to make use of bar/bat mitzvah resources available on the Temple Web site. Click "Learning" → "Religious School" → "Bar & Bat Mitzvah Program."

## A REMINDER ABOUT SPONSORSHIPS

Because the Emanu-El *Bulletin* is now a monthly publication, please be advised that we need one month's notice for Pulpit Flower dedications and *Oneg Shabbat* sponsorships. For more information, call Sherry Nehmer at (212) 744-1400, ext. 312.

## OF BLESSED MEMORY

At the time of death, as well as during a period of illness, family members need the comfort, support and caring of a community. Temple Emanu-El's clergy and staff always are available to help soothe these difficult hours. Because there are many ways to honor a loved one, the rabbis and cantor can provide guidance that is suited to your family's personal philosophy. Call (212) 744-1400.

# Life-Cycle Events



**The following students of our Religious School will become *B'NEI MITZVAH* in December:**

### Thursday, December 3

*Jake Croman*, son of Steven and Harriet Croman

### Saturday, December 5

*Adam J. Koepfel*, son of Lesley and David Koepfel

*Rachel Eloise Ackman*, daughter of Karen and William Ackman

*We are grateful for their sponsorship of each Friday evening's Oneg Shabbat.*

**PULPIT FLOWERS at worship services have been donated by the following congregants:**

### For the Sabbath of December 4 and 5

The Harteveltdt Family in loving memory of *Henry H. Harteveltdt Jr.* and *Lucile S. Harteveltdt*

Emily Fisher Landau in memory of my beloved sons *M. Anthony Fisher* and *Richard L. Fisher*

### For the Sabbath of December 11 and 12

Karel, Frank, Danielle and Alix Greenberg in loving memory of *Lillian* and *Marvin Greenberg*

Bonnie, David, Richard, Nancy and Gail Maidman in loving memory of *William Maidman* and *Lea Maidman*

Monte Wolfson; children Robert, Suzanne, Jon and Katherine; and grandchildren Jayne and Thomas, in loving memory of *Doris Wolfson*, and in honor of the birth of granddaughter *Devorah Ella*

***continued on top of next page***

Charles S. Salomon  
The Universal  
Funeral Chapel  
1076 Madison Avenue  
(212) 753-5300  
Our service is available in the  
Temple, home or our Chapel.

The Cemeteries of Congregation Emanu-El  
Salem Fields and Beth-El  
A limited number of above-ground crypts are  
available in our community mausoleum.  
For information, please call Dr. Mark W. Weisstuch  
at the Temple Office, (212) 744-1400.

## For the Sabbath of December 18 and 19

Sally F. Broido in memory of  
her beloved sister *Ellin F. Ente*

Mrs. A. Coleman Poll in loving memory of  
her parents, *Mildred* and *Jacques G. Coleman*,  
and her grandmother *Sophie Brock*

Denny and Alex Rein and Nicki Rein Shalette  
in loving memory of *Mark Alan Rein*

Barbara Slifka in loving memory of  
her mother, *Sylvia Slifka*

## For the Sabbath of December 25 and 26

Rhoda Weiskopf Cohen in loving memory of  
my dearest husband and best friend,  
*Herbert George Cohen M.D.*

Mary Louise Fleur in loving memory of  
her mother, *Mary Cisterma Schwartz*

## At a Glance: December 2009



**December 1**  
**Tuesday, 12 PM**  
*What's Cookin'?*  
One East 65th Street



**December 1**  
**Tuesday, 7:30 PM**  
*Waiting for Armageddon*  
JCC, 334 Amsterdam Ave.



**December 2, 9, 16, 23**  
**Wednesday, 12:30 PM**  
*Chanting of the Haftarah*  
One East 65th Street



**December 6**  
**Sunday, 10 AM**  
*Skirball: Images of Eve*  
One East 65th Street



**December 7**  
**Monday, 3 PM**  
*Artistry of Michael Aram*  
136 West 18th Street



**December 7, 14, 21, 28**  
**Monday, 6:15 PM**  
*Chanting of the Torah*  
One East 65th Street



**December 9**  
**Wednesday, 9 AM**  
*Men's Club Book Group*  
One East 65th Street



**December 11**  
**Friday, 5:15 PM**  
*Chanukah Service*  
Sanctuary (Fifth Ave. at 65th)



**December 11**  
**Friday, 6:30 PM**  
*RS Chanukah Dinner*  
One East 65th Street



**December 11**  
**Friday, 6:30 PM**  
*Chanukah Sleepover*  
One East 65th Street



**December 12**  
**Saturday, 10 AM**  
*Tot Shabbat*  
One East 65th Street



**December 12**  
**Saturday, 10 AM**  
*Pantry Sort/Toy Sort*  
YCP, 8 East 109th Street



**December 13, 16**  
**Sunday, 10 AM**  
**Wednesday, 4 PM**  
*Eight Nights of Light*  
10 East 66th Street



**December 13**  
**Sunday, 10 AM**  
*Hidden War on America*  
One East 65th Street



**December 13**  
**Sunday, 12 PM**  
*Feeding the Hungry/  
Winter Wishes  
Wrapping Party*  
10 East 66th Street



**December 13**  
**Sunday, 10:30 AM**  
*Prague in the Time  
of the Maharal*  
One East 65th Street



**December 16**  
**Wednesday, 6:30 PM**  
*Stettenheim  
Literary Circle*  
One East 65th Street



**December 20**  
**Sunday, 11 AM**  
*Stitch'n Time*  
One East 65th Street



**December 22**  
**Tuesday, 5 PM**  
*Ronald McDonald House*  
405 East 73rd Street



**Book Discussion**



**Community • Volunteering**



**Film Screening**



**Lecture • Class • Tour**



**Religious School**



**Worship & Spirituality**



**Young People's Program**

# TEMPLE EMANU-EL BULLETIN

Vol. 82, No. 4  
December 2009

CONGREGATION EMANU-EL  
of the City of New York  
One East 65th Street, New York, NY 10065  
(212) 744-1400 • [www.emanuelnyc.org](http://www.emanuelnyc.org)

INSERT  
INDICIA  
HERE



## HERBERT & EILEEN BERNARD MUSEUM OF JUDAICA: OBJECT OF THE MONTH

**B**EFORE 2009 CONCLUDES, it is fitting that we remember the 80th anniversary of Emanu-El's Sanctuary on Fifth Avenue and 65th Street. Construction was completed in 1929, and the first religious service held on site was the funeral in September 1929 of then-President and major figure in American Jewish history **Louis Marshall** (pictured right at the laying of the Temple cornerstone).

By the mid-1920s, growing membership and the changing panorama of New York City suggested a need for a new home in a different part of Manhattan. Louis Marshall's vision and determination served as the driving force behind the decision to move the Temple from its 43rd Street building further north to 65th Street. He saw the creation of the "new" Temple not only as an important step in the life of Emanu-El as a congregation but also as an advance in the spread of Judaism and Jewish religious education in New York City and the nation.



For more about Congregation Emanu-El's history and to view our magnificent collection of Judaica, please visit the Herbert & Eileen Bernard Museum of Judaica at Temple Emanu-El. (Hours: Monday through Thursday, 10 AM to 4:30 PM; enter at One East 65th Street.) Information also can be found on the Temple Web site ([www.emanuelnyc.org/museum.php](http://www.emanuelnyc.org/museum.php)). In addition, we offer the Emanu-El interactive timeline; click "About Us" → "History" → "Emanu-El: Past to Present."