



TEMPLE EMANU-EL Bulletin

Volume 79, Number 12

November 17, 2006

THANKSGIVING

FAMILY WORSHIP SERVICES

Sunday morning, November 19

Main Sanctuary—11:30 a.m.

Monday evening, November 20

Main Sanctuary—5:30 p.m.

Religious School dismissal will be from Fifth Avenue after each service.

Classes will not be held Wednesday, November 22 and Sunday, Nov. 26.

CONGREGATIONAL SERVICE Wednesday evening, November 22

Greenwald Hall—5:30 p.m.

Rabbi David M. Posner will officiate.
Please enter at the Marvin and Elisabeth Cassell Community House,
One East 65th Street.

SABBATH SERVICES

Friday evening, November 24 Main Sanctuary

Organ Recital—5 p.m.

Sabbath Eve Service—5:15 p.m.

WQXR Radio (96.3 FM) and Internet
(www.wqxr.com) broadcasts—5:30 p.m.

Saturday morning, November 25 Women's Auxiliary Lounge

Torah Study—9:15 a.m.

Main Sanctuary

Service—10:30 a.m.

Torah Portion—Toledos

Readings—Genesis 25:19-28:9

Malachi 1:1-2:7

**Sermon: Rabbinic Intern
Adam Rosenwasser**

FOR
FAMILIES

CHANUKAH SHABBAT DINNER & BUILDING BLOCKS WORKSHOP

Friday, December 8 6 p.m.

Religious School families are invited to participate in a truly special event. Temple Emanu-El is sponsoring construction of “the world’s tallest” Chanukah menorah—

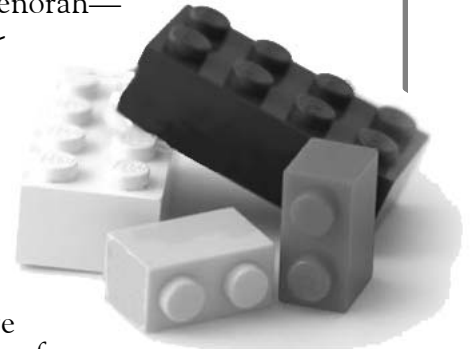
a 400-square-foot model made

completely from 50,000

LEGO® building blocks!

This two-hour intensive activity is one of

several programs organized as an educational tool for children and parents by New Jersey architect Stephen Schwartz through his “Building Blocks Workshops” initiative and the Jewish history construction series. (For more information about the program, log on to www.buildingblocksworkshops.com.)



This event is organized as part of the Religious School Chanukah Shabbat dinner. Families are encouraged to join us for services in the Main Sanctuary at 5:15 p.m. RSVP by Monday, Dec. 4 to the Religious School office with the number of children and adults who will be attending. (212) 744-1400, ext. 226

BAR MITZVAH

**The following student of
our Religious School will become
a Bar Mitzvah this weekend:**

Douglas H. Shuffman,
son of
Linda and David Shuffman

ONEG SHABBAT

**The Oneg for Friday, November 24
is sponsored by the following
members of our congregation:**

Linda and David Shuffman
in honor of their son *Douglas*
becoming a Bar Mitzvah

Susan and Donald Newhouse
in loving memory of
Mitzi and Samuel Newhouse

TO BE NOTED

The Women's Auxiliary is seeking two additional volunteer tutors for the "English in Action" session that meets Thursdays from 1 p.m. to 3 p.m. "English in Action" is a program sponsored by the English-Speaking Union of the United States, a nonprofit, nonpolitical educational organization based in New York City. The goal of the program is to help newcomers to the U.S. gain fluency and confidence in conversational English through weekly sessions. In addition to practicing the language without the fear of making mistakes, students learn about life in this country and teach their American partners about their own lands and customs. Every year, approximately 800 students and volunteer tutors in New York City are paired in this one-to-one program. (212) 744-1400, ext. 235

Charles S. Salomon
The Universal Funeral Chapel
1076 Madison Avenue (212) 753-5300
Our service is available in the Temple, home, or our Chapel.

PULPIT FLOWERS

**Pulpit flowers for Thanksgiving
are the generous donation
of the following congregants:**

Donald and Susan Marley Newhouse
in loving memory of
Lillian and Harry Marley

Peg Ogden in loving memory of her parents,
Margaret S. and Stephen A. Ogden;
her brother, *Stephen A. Ogden, Jr.;*
her grandmother, *Tilda W. Stern;*
and her aunt, *Katherine S. Oppenheimer*

Mr. Harold Prince
in loving memory of his mother,
Blanche Prince

**Pulpit flowers at Sabbath services
this weekend are donated generously
by our congregants:**

Jim, Susan and Hannah Baumann
in loving memory of
Hannah Hirschhorn Baumann

June H. Jones in loving memory of
Hannah Cohen,
and *Helen and I. Henry Hirsch*

"Remember the Sabbath Day."

**OPERATION:
GOOD SHABBOS**

**Every Friday...
Wish a good one
to a friend!**



The Cemeteries of Congregation Emanu-El
Salem Fields and Beth-El
A limited number of above-ground crypts are available in
our community mausoleum. For information, please call
Dr. Mark W. Weissstuch at the Temple Office, (212) 744-1400.

STORIES FROM THE RESTORATION

UNDERTAKING a project of the scale of Temple Emanu-El's restoration requires the dedication and coordination of a great number of people. Over the next few weeks, we will hear from some who helped make this effort possible. We begin with two members of the architectural preservation team: James W. Rhodes, FAIA, of Preservation Design and Tom Lindberg, AIA, of Beyer Blinder Belle Architects & Planners LLP.

Your résumés include an impressive list of projects—Grand Central Terminal, the Ellis Island National Monument and Museum, the Federal Reserve Bank of New York, the Guggenheim. Where does Temple Emanu-El stand in terms of your most memorable projects and why?

JIM RHODES: As important as many of my projects are, Temple Emanu-El has been the most fulfilling project in my career. The phrase “Cleanliness is next to godliness” is attributed to John Wesley...and before that, similarly to Francis Bacon. But, I recently read that it is an old Hebrew proverb used in the late second century by Rabbi Phinehas ben Yair. Stripping away the mask of grime has revived not only this wonderful place, but [it] revives the spirit as well.



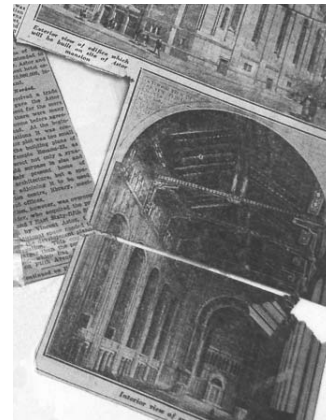
TOM LINDBERG: Temple Emanu-El is one of the truly great buildings in the city and the country. The restoration of the Temple has been one of the most important of all my projects, and it is a once in a lifetime job.



Research of historic background plays a large part in the work you do. What items of interest did you find out about Temple Emanu-El that influenced the project?

TL: The Temple is blessed with an excellent archive of original architectural drawings,

construction photos and publications from the opening of the new building that include the architect's description of the design.



Because the interior had grown dull from 75 years of soiling, we were very interested to read about the original design intent, and that helped us to carefully control our restoration methods. We learned that the tiled walls of the Temple were

designed to be lighter in color near the floor and to gradually grow darker towards the ceiling, and so we developed a cleaning process that preserved the subtle variation in surface color. Our understanding of the original color palette also helped us when designing and selecting new fabrics and carpeting, [as well as] when designing and focusing the new lighting. We respected the original idea of lighting the sanctuary with discreet, recessed lighting, and so we refurbished all of the original fixtures, adding better lamps to improve the light levels and only introducing new fixtures that are unobtrusive and understated in their affect.

JR: Certainly the early building sketches, plans, photos and written accounts helped us learn of the original architect's design intent. Indeed we were better able to rediscover and enhance that design with new fab-

rics and lighting. In many ways, [we were able to] strengthen, clarify and complement those beginnings. But also, through working closely with [Temple Administrator] Mark Heutlinger and Elka Deitsch, [senior curator of the Bernard Museum,] I gained an understanding and respect for the traditions and elements of worship and of Jewish culture. Now I know what a *ketubah* is...the *ner tamid*, the *parokhet*, the application of the *rimmonim* and the *yad*, and the beauty and meaning of Sukkot. In the stained glass, I begin to learn what the tribal symbols mean and more of the universal message of the Jewish faith. [As a result,] I've learned a little more about myself.

You are advocates of sustainable design. Did you incorporate any sustainable elements into the preservation of Temple Emanu-El?

TL: The very act of preserving a building is a sustaining process. We used a dry method for cleaning the major wall surfaces, which was completely non-toxic and used no water. The lighting system includes low-voltage and fluorescent fixtures that are energy efficient. [We also employed] a lighting-control system that dims many of the fixtures to reduce energy consumption and extend lamp life.

JR: Lighting is now more directed, efficient and well controlled. Air quality is healthier. We can talk about limited resources, and “embodied energy” in terms of BTUs in the stone and steel, but we also can think in terms of “embodied cultural energy” in sustaining this place and the meaning it conveys to us and through us culturally.

What are some of your favorite memories from this two-year project? Of what aspect (or aspects) of the project are you most proud?

JR: Without hesitation I would say that the greatest honor and moment of pride, if I am permitted, was in carrying the Torah (the “correct way” as



Photo by James W. Rhodes

Dr. Posner instructed) to be installed in the newly fitted ark. I sat in services to hear gasps of awe at the display of Torahs and ornament. Rightfully, the whole Temple was designed to focus on the ark and wonder at its beauty.

At Grand Central Terminal, I was moved when a young girl entered with her father and pointed to the newly cleaned and illuminated ceiling and said, “Look Daddy... STARS!” Here at Emanu-El I am moved by that same kind of “WOW” moment, knowing that a new generation grasps his or her own heritage. This is the real purpose, meaning and reward of preservation.

TL: I especially loved getting an up close look at the main ceiling, where we could see the artists’ brushstrokes and the pencil annotations of the designer underneath the paint surface. We could also see where changes and reworking of the design was done. This made the artwork come alive for us.

The many vivid colors and patterns in the ceiling were absolutely stunning when seen close up. Having a close-up view of the mosaic arch at the *bimah* was also thrilling, as was seeing it sparkle again as it came clean.

Many of the patterns and symbols in the mosaic had virtually disappeared under the grime. I also loved discovering the artistic bravura in the gold arch that frames the west balcony. Its beauty was very much obscured by dirt, but once cleaned, we could see that the arch has a subtle gradation of hue and is accented with bands of gold leaf that now glow once again.

I am probably most proud of the fact that we could return the Temple to its original condition without compromise, doing no harm to the building fabric but rather helping to extend its life and bring back the incredible beauty that lay partially hidden by the layers of age. The Temple looks as good today as the day it opened in 1930.

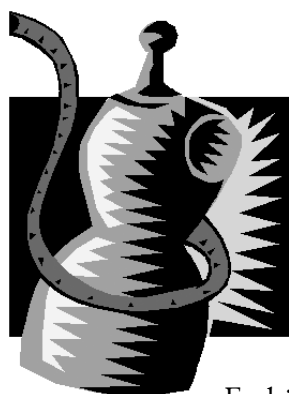


Photo by James W. Rhodes

UPCOMING EVENTS

CLUB 56 & CLUB 78:
Chanukah Party
Saturday, December 2
6:45 p.m.

Members are invited to join us for a ceramic-painting party at MAKE (1566 Second Avenue, between 81st and 82nd streets (212) 570-6868). Snacks and ice cream will be served. Cost is \$30 per person. Drop off and pick up is at MAKE. For more information, contact Youth Group Advisor Lori Jacobson. (516) 965-4736 youth.emanuel@gmail.com



From Seventh Avenue to Project Runway
Tuesday, December 5
10 a.m.

The Women's Auxiliary cordially invites Temple members to a docent-led tour of several exhibits on display at the Museum of the Fashion Institute of Technology (Seventh Avenue at 27th Street). **As our tour begins promptly at 10 a.m., attendees must arrive 10 minutes prior.** After the tour, we will have lunch at Tre Dici Restaurant (128 West 26th Street). The cost for this event is \$50 for Women's Auxiliary members, \$60 for nonmembers and guests. Make checks payable to the Women's Auxiliary. Reservations must be received by Friday, December 1. No walk-ins will be allowed. (212) 744-1400, ext. 235

An Evening About Chocolate
Monday, December 11 6:30 p.m.

The Men's Club is sponsoring a pre-Chanukah celebration led by Martine Leventer, owner and creator of Martine's Chocolates (rated #1 by *Consumer's Report* and among *Chocolatier Magazine's* "10 Best Artisan Chocolatiers"). These upscale confections are handmade daily, using only the freshest and finest natural ingredients. (212) 744-1400, ext. 250



SKIRBALL
CORNER

**THE HAZON FOOD
CONFERENCE:**
Jews, Food and
Contemporary Issues

Thursday, December 14 —
Sunday, December 17
(Isabella Freedman Jewish Retreat
Center in Falls Village, Conn.)

Jewish food traditions are rich and ancient, but how do they fit in with today's world? How do we add a distinctly Jewish flavor to today's healthier food? How do we eat sustainably while maintaining Jewish food traditions? The Hazon Food Conference addresses these issues and more through a varied program—featuring speakers, workshops and cooking demonstrations—that is both engaging for adults and family friendly. To register, contact Hazon at (212) 644-2332 or www.hazon.org.

The Skirball Center for Adult Jewish Learning at Temple Emanu-El is a co-sponsor of this program.

SKIRBALL



The Skirball Center for Adult Jewish Learning at Temple Emanu-El

**Women's Auxiliary:
Book Discussion Group**
Tuesday, December 12
10:30 a.m.



As part of our congregationwide "Emanu-El Reads!" program, Temple librarian Elizabeth Stabler will lead a discussion session about Sherwin Nuland's *Maimonides* for Women's Auxiliary members. RSVP by Friday, December 8. (212) 744-1400, ext. 235

AROUND THE TEMPLE

שִׁירֵנוּ לַיהוָה שִׁיר חֲדָשׁ

SHIRU L'ADONAI SHIR KHADASH: SING A NEW SONG TO GOD

Come sing, pray and learn at our new **Shabbat Shalom** service open to the entire Emanu-El congregation. Warm and inviting, this special service will be held in the Stettenheim Library, which will be transformed into our own sacred space. Throughout the service we'll engage the meaning of prayer and find ways to make it our own. Using a newly designed prayer book, we will connect with familiar melodies from our heritage as well as new ones that will create a dynamic and refreshing approach to prayer.

SONG * PRAYER * COMMUNITY



**BE PART OF THIS NEW EXPRESSION
OF FAITH AT EMANU-EL.
JOIN US AT 6:30 P.M. ON THE
FOLLOWING FRIDAYS: DECEMBER 1,
JANUARY 5, FEBRUARY 2,
MARCH 2, APRIL 13, MAY 4.**

TEMPLE EMANU-EL BULLETIN



November 17, 2006
Volume 79, Number 12
Web site: www.emanuelnyc.org

Dr. David M. Posner

Senior Rabbi

Amy B. Ehrlich

Associate Rabbi

Nadia E. Gold

Assistant Rabbi

Lori Corrsin

Cantor

Dr. Ronald B. Sobel

Senior Rabbi Emeritus

Marcia Waxman

President

Rabbi Leon A. Morris

*Director of the Skirball Center
for Adult Jewish Learning*

Dr. Mark W. Weisstuch

Administrative Vice President

Mark H. Heutlinger

Administrator

Robyn W. Cimbol

Director of Development

Henry Fruhauf

Administrator Emeritus

Published weekly September 1 through
May 25 by Congregation Emanu-El of the
City of New York, formed by the
consolidation of Emanu-El Congregation
(founded 1845) and Temple Beth-El.

Postmaster, send address changes to:
Temple Emanu-El Bulletin, One East 65th Street
New York, NY 10021 (212) 744-1400
Periodicals Postage Paid at New York, NY
USPS 891-160.

PERIODICALS POSTAGE
PAID AT NEW YORK, NY